

LATTO

MONDAY
MORNING
INTEL



HEADING
TOP 20 POP!



SHAZAM
#3 U.S.

BIG
ENERGY

PARENTAL
ADVISORY
EXPLICIT CONTENT

MMI
PROFILE
JR AMMONS

TOP 40 *EDITION*

JANUARY 31, 2022

LAUREN SPENCER-SMITH

"FINGERS CROSSED"

#2 Most Added At T40 Again!

Trending Top 25 at Pop in Just 2 Weeks!

New Adds @ WBBM, KRBE, WWPW, KQMV, KBKS, WKQI, WFLZ, WPOI, KENZ, KUDD, WKFS, WXXL, WPYO, KHFI, WNVZ, WPRO, WNFN, WMKS, WEZB, WLDI, WAPE, WKSE, WPXY and MORE!

11.5M US Streams TW | 33M+ TD | US Streaming Rank: #8 Pop | #16 Overall
30M+ Spotify Streams First Week! 43M+ TD! #11 US Spotify Top 200 Weekly Chart
#13 on Spotify's *Today's Top Hits* | #7 on Spotify's *Pop Rising*
#1 US and UK iTunes Charts (Peak Position)
#1 on Apple Music *Today's Hits & Cover!*
#2 US Shazam Discovery | #6 US Pop Shazam | #13 US Shazam!



THE ANXIETY (WILLOW & TYLER COLE)

"MEET ME AT OUR SPOT"

Heading Top 10 @ Pop!

Closeout Adds TW @ WMKS, WWKL

Power & Subpower Moves! 12 New Increases TW!

Top 25 US Streaming | Pop Genre

Another 7.2M+ US Streams TW | 218M+ US Streams TD

Top 30 US Shazam

Willow As Direct Support on Billie Eilish US Tour Kicking off in February!

Live Performance with 65M Views

BLXST "CHOSEN"

Heading Top 25 @ Pop! #1 Rhythm & Urban (Peak)

New Adds TW @ KYLD / San Francisco, KLUC / Las Vegas and MORE!

Top 40 US Shazam | #8 Hip Hop/Rap | RIAA CERTIFIED US GOLD!!

324M+ Total Streams TD | 115M US Streams TD

10M+ Total Streams TW | 2.6M US Streams TW

Official Video with 46M+ Views



IANN DIOR

"LET YOU"

Official Impacting Coming Soon | Early Airplay Now!

New Adds TW @ WNFN, XHTO

Leading the way: SiriusXM Hits-1, SiriusXM Venus, KHKS, WNCI, and More!

Cover of Spotify's *Pop Rising!* | New Album Dropped Friday!

MONDAY MORNING INTEL

JANUARY 31, 2022

TABLE OF CONTENTS

4 #1 SONGS THIS WEEK

5 POWERS

6 ACTION/RECURRENTS

8 HOTZONE/DEVELOPING

9 PROFILE

11 VIDEO STREAMING

12 TOP 40 CALLOUT

13 FUTURE TRACKS

14 INTELESCOPE

16 INTELEVISION

17 METHODOLOGY

18 THE BACK PAGE

MMI - A MODERN DAY MUSIC RESEARCH SYSTEM

**MONDAY
MORNING
INTEL**

#1 SONGS THIS WEEK

BY MMI COMPOSITE CATEGORIES

1.31.22

AIRPLAY

GLASS ANIMALS "HEAT WAVES"

RETENTION

ADELE "EASY ON ME"

CALLOUT

THE KID LAROI & JUSTIN BIEBER "STAY"

AUDIO

GAYLE "ABCDEFU"

VIDEO

LIL NAS X & JACK HARLOW "INDUSTRY BABY"

SALES

GAYLE "ABCDEFU"

COMPOSITE

ADELE "EASY ON ME"

MondayMorningIntel.com



CLICK HERE to E-MAIL Monday Morning Intel with your thoughts, suggestions, or ideas.

**MONDAY
MORNING
INTEL**

Weighted Airplay, Retention Scores, Streaming Scores, and Sales Scores this week combined and equally weighted deviser Powers Rankers.

TWRK AIRPLAY	TWRK RETENTION	TWRK CALLOUT	TWRK AUDIO	TWRK VIDEO	TWRK SALES	TWCOMP RANK	ARTIST	TITLE	LABEL
2	1	3	3	5	3	1	ADELE	Easy On Me	Columbia
1	2	4	2	10	5	2	GLASS ANIMALS	Heat Waves	Republic
9	5	5	1	4	1	3	GAYLE	abcdefu	Arthouse/Atlantic
4	3	1	5	3	11	4	THE KID LAROI & JUSTIN BIEBER	Stay	Columbia
8	6	2	6	1	14	5	LIL NAS X & JACK HARLOW	INDUSTRY BABY	Columbia
5	7	8	9	18	2	6	ED SHEERAN	Shivers	Atlantic
3	4	6	10	12	18	7	DOJA CAT	Need To Know	Kemosabe/RCA
7	9	11	15	26	7	8	JUSTIN BIEBER	Ghost	Def Jam
12	11	26	12	14	8	9	THE ANXIETY, WILLOW/TYLER COLE	Meet Me At Our Spot	MSFTS/Roc Nation
13	17	32	11	9	6	10	ADELE	Oh My God	Columbia
18	16	10	21	17	10	11	ACRAZE	Do It To It f/Cherish	Thrive/Virgin
6	8	7	23	32	22	12	LIL NAS X	Thats What I Want	Columbia
24	19	9	24	25	4	13	LATTO	Big Energy	RCA
17	14	20	14	7	34	14	DOJA CAT	Woman	Kemosabe/RCA
23	20	21	17	2	24	15	CKAY	Love Nwantiti (Ah Ah Ah)	Chocolate City/Atlantic
14	15	23	18	15	27	16	BRUNO MARS/A . PAAK/SILK SONIC	Smokin Out The Window	Aftermath Ent./Atlantic
10	10	22	16	28	28	17	NEIKED X MAE MULLER X POLO G	Better Days	Columbia-Capitol
11	12	19	20	30	26	18	POST MALONE & THE WEEKND	One Right Now	Republic
26	28	30	4	19	13	19	LAUREN SPENCER-SMITH	Fingers Crossed	---
33	24	15	8	13	29	20	SZA	I Hate U	TDE/RCA
16	23	37	7	16	21	21	THE WEEKND	Sacrifice	XO/Republic
20	18	12	42	22	38	22	CHLOE	Have Mercy	Parkwood/Columbia
28	34	16	27	8	39	23	OLIVER TREE	Life Goes On	Atlantic
21	21	17	28	31	42	24	GIVEON	For Tonight	Not So Fast/Epic
30	27	13	22	39	32	25	EMMY MELI	I Am Woman	Disruptor/Arista
40	x	24	13	23	37	26	TAYLOR SWIFT	All Too Well (Taylor's Version)	Republic
31	32	28	34	27	20	27	ALESSO & KATY PERRY	When I'm Gone	10:22PM/ASW/Capitol
36	22	18	33	42	25	28	COLDPLAY X BTS	My Universe	Parlophone/Atlantic
50	x	x	26	6	19	29	JAYMES YOUNG	Infinity	Atlantic/EMG
22	26	27	35	43	35	30	SWEDISH HOUSE MAFIA/THE WEEKND	Moth To A Flame	Republic
15	13	33	45	47	33	31	TAYLOR SWIFT	Message In A Bottle (Taylor's	Republic
41	39	34	29	40	9	32	TIESTO & AVA MAX	The Motto	Atlantic
29	33	14	40	38	41	33	BLXST	Chosen f/Ty Dolla \$ign & Tyga	Red Bull/EVGL
43	x	x	46	24	12	34	YUNG BLEU	Beautiful Lies f/Kehlani	Vandross Music/EMPIRE
25	30	38	48	29	17	35	CHARLIE PUTH	Light Switch	Atlantic
32	35	31	31	44	30	36	JUICE WRLD	Wandered To LA f/Justin Bieber	GradeA/Def Jam-Interscope
27	25	25	43	45	43	37	BENSON BOONE	Ghost Town	Night Street/Warner
44	x	x	39	34	16	38	ELLE KING & MIRANDA LAMBERT	Drunk (And I Don't Wanna Go..)	RCA/Columbia Nashville
35	38	40	19	20	49	39	THE WALTERS	I Love You So	Warner
38	x	39	41	41	15	40	AVRIL LAVIGNE F/BLACKBEAR	Love It When You Hate Me	DTA/EMG
45	x	x	32	11	45	41	AMAARAE	Sad Girlz Luv Money f/K. Uchis	Platoon/Interscope
19	29	36	49	48	23	42	PITBULL	I Feel Good f/A. Watts & DJWS	Mr. 305
37	37	35	44	46	31	43	BBNO\$	edamame f/Rich Brian	bbno\$/mtheory/further.
42	36	41	36	37	36	44	FIREBOY DML X ED SHEERAN	Peru	YBNL/EMPIRE
39	40	x	x	x	x	45	ALTEGO/BRITNEY SPEARS/GINUWINE	Toxic Pony	RCA
47	x	x	38	21	40	46	MONEYBAGG YO	Scorpio	CMG/NLess/Interscope
34	31	29	47	49	46	47	JONAS BROTHERS	Who's In Your Head	Republic
49	x	x	25	33	47	48	DRAKE	Girls Want Girls f/Lil Baby	OVO/Republic
46	x	x	30	36	48	49	POLO G	Bad Man (Smooth Criminal)	Columbia
48	x	x	37	35	44	50	SADIE JEAN	WYD Now?	SELENE

Songs that are out performing current airplay results and a worth a second look in terms of airplay acceleration.

TW RANK	TW RK AIRPLAY	TW MMI COMPOSITE	ACTION FACTOR	ARTIST	TITLE	LABEL/IMPRINT
1	50	29	21	JAYMES YOUNG	Infinity	Atlantic/EMG
2	40	26	14	TAYLOR SWIFT	All Too Well (Taylor's Version	Republic
3	33	20	13	SZA	I Hate U	TDE/RCA
4	24	13	11	LATTO	Big Energy	RCA
5	41	32	9	TIESTO & AVA MAX	The Motto	Atlantic
6	43	34	9	YUNG BLEU	Beautiful Lies f/Kehlani	Vandross Music/EMPIRE
7	23	15	8	CKAY	Love Nwantiti (Ah Ah Ah)	Chocolate City/Atlantic
8	36	28	8	COLDPLAY X BTS	My Universe	Parlophone/Atlantic
9	18	11	7	ACRAZE	Do It To It f/Cherish	Thrive/Virgin
10	26	19	7	LAUREN SPENCER-SMITH	Fingers Crossed	---

Songs that have significantly dntreanded on the Powers charts are reclassified as Recurent and can remain there for up to two years, before being reclassified as Gold.

RANK TW	ARTIST	TITLE	LABEL/IMPRINT
1	ELTON JOHN & DUA LIPA	Cold Heart	Mercury/Warner-Interscope
2	ED SHEERAN	Bad Habits	Atlantic
3	OLIVIA RODRIGO	good 4 u	Geffen/Interscope
4	DUA LIPA	Levitating	Interscope-Warner
5	BILLIE EILISH	Happier Than Ever	Darkroom/Interscope
6	LIL NAS X	MONTERO (Call Me By Your Name)	Columbia
7	DOJA CAT	Kiss Me More f/Sza	Kemosabe/RCA
8	DOJA CAT	You Right f/The Weeknd	XO/Kemosabe/Republic-RCA
9	THE WEEKND	Save Your Tears	XO/Republic
10	MANESKIN	Beggin	Sony Music Latin/Arista
11	24KGOLDN	Mood f/Iann Dior	RECORDS/Columbia
12	ARIANA GRANDE	positions	Republic
13	THE KID LAROI	Without You with Miley Cyrus	Columbia
14	THE WEEKND	Blinding Lights	XO/Republic
15	OLIVIA RODRIGO	deja vu	Geffen/Interscope
16	POST MALONE	Circles	Republic
17	HARRY STYLES	Adore You	Columbia
18	ARIANA GRANDE	34+35	Republic
19	HARRY STYLES	Watermelon Sugar	Columbia
20	MACHINE GUN KELLY & BLACKBEAR	My Ex's Best Friend	Bad Boy/Interscope
21	ARIANA GRANDE	pov	Republic
22	CHRIS BROWN X YOUNG THUG	Go Crazy	Chris Brown/300 Ent.-RCA
23	DUA LIPA	Break My Heart	Warner
24	DUA LIPA	Don't Start Now	Warner
25	TATE MCRAE	You Broke Me First	RCA
26	OLIVIA RODRIGO	drivers license	Geffen/Interscope
27	BLACKBEAR	Hot Girl Bummer	Beartrap/Alamo/Interscope
28	DOJA CAT	Say So	Kemosabe/RCA
29	JUSTIN BIEBER	Peaches f/Daniel Caesar/Giveon	Def Jam
30	THE WEEKND	Take My Breath	XO/Republic



AIRPLAY INTEL

3.0

LAST WEEK
OF FREE SUBSCRIPTIONS
DON'T MISS OUT

CLICK HERE

YOUR STATION...YOUR RESEARCH...YOUR COMPETITION + CALL OUT...YEAABUDDY

Songs that are performing higher than most with all of the heaviest increases in all MMI Components.

	ARTIST	TITLE	LABEL/IMPRINT
HOTZONE	CHARLIE PUTH	Light Switch	Atlantic
HOTZONE	AVRIL LAVIGNE F/BLACKBEAR	Love It When You Hate Me	DTA/EMG
HOTZONE	ALTEGO/BRITNEY SPEARS/GINUWINE	Toxic Pony	RCA
HOTZONE	THE WALTERS	I Love You So	Warner
HOTZONE	LAUREN SPENCER-SMITH	Fingers Crossed	---
HOTZONE	THE WEEKND	Sacrifice	XO/Republic
HOTZONE	SENA KANA	Undisputed f/Poo Bear	G&L International Inc
HOTZONE	DAISY THE GREAT X AJR	Record Player	S-Curve/Hollywood
HOTZONE	JENA ROSE	Checkmate	Gem Street Music
HOTZONE	ALESSO & KATY PERRY	When I'm Gone	10:22PM/ASW/Capitol
HOTZONE	DOJA CAT	Woman	Kemosabe/RCA
HOTZONE	JUICE WRLD	Wandered To LA f/Justin Bieber	GradeA/Def Jam-Interscope
HOTZONE	FIREBOY DML X ED SHEERAN	Peru	YBNL/EMPIRE
HOTZONE	LATTO	Big Energy	RCA
HOTZONE	EMMY MELI	I Am Woman	Disruptor/Arista
HOTZONE	SZA	I Hate U	TDE/RCA

New music that is increasing at a moderate rate in all MMI Components — Upward Trending Music.

	ARTIST	TITLE	LABEL/IMPRINT
DEVELOPING	CHLOE	Have Mercy	Parkwood/Columbia
DEVELOPING	THE ANXIETY, WILLOW/TYLER COLE	Meet Me At Our Spot	MSFTS/Roc Nation
DEVELOPING	ADELE	Oh My God	Columbia
DEVELOPING	BRUNO MARS/A .PAAK/SILK SONIC	Smokin Out The Window	Aftermath Ent./Atlantic
DEVELOPING	TAYLOR SWIFT	Message In A Bottle (Taylor's	Republic
DEVELOPING	TIESTO & AVA MAX	The Motto	Atlantic
DEVELOPING	ACRAZE	Do It To It f/Cherish	Thrive/Virgin
DEVELOPING	CKAY	Love Nwantiti (Ah Ah Ah)	Chocolate City/Atlantic
DEVELOPING	BENSON BOONE	Ghost Town	Night Street/Warner
DEVELOPING	BLXST	Chosen f/Ty Dolla \$ign & Tyga	Red Bull/EVGLE
DEVELOPING	TAYLOR SWIFT	All Too Well (Taylor's Version	Republic
DEVELOPING	POST MALONE & THE WEEKND	One Right Now	Republic
DEVELOPING	GIVEON	For Tonight	Not So Fast/Epic
DEVELOPING	88RISING & BIBI	The Weekend	88rising
DEVELOPING	ALYA	Pleasure Is Mine	Independent
DEVELOPING	WALE	Poke It Out f/J. Cole	MMG/Warner



CURRENT POSITION:
OPERATIONS MANAGER /
BRAND MANAGER
KZPT & WDAF

Congrats on your return to Kansas City and a really full plate. One of your many hats is programming The Wolf-WDAF. Have you been warned about the different culture in radio/label relationships regarding Country? The industry actually assigns number one push weeks and every one cooperates. Crazy.

I wouldn't say warned...lol...I have been told the relationship between country labels and radio programmers is certainly different than what I've experienced in the pop world. I guess we'll see...

You've had an amazing and success programming run at WZPL in Indy for like, a dozen years. What will you miss most about that station.

Easy: the people. I was fortunate to work with some incredibly talented and smart people. The Smiley Morning Show (Dave, Nikki, Toni, Will & Cole) are hands down some of the funniest people I've ever been around - on and off the air. They made my job so easy and I will be forever grateful for the time I got to spend with them.

It's a 7 hour drive from Indianapolis to KC. You're loading at 20 ft. U-Haul with a 87 Ford Econoline Cargo Van without a heater. 3 people are gonna show up to help you pack, load, drive and unload. There is an artist, another radio programmer and a label rep. Who would they be?

Wow...let's see... Taylor Swift, mainly 'cause I'm just a huge fan - love everything about her ...Chase Daniels (Audacy/Madison), I've worked with Chase in 3 markets and he's one of the most gifted guys in radio and one of my best friends....and for the label rep, I'd have to go with Michael Chase (Warner Nashville)... he's like the brother I never had. I hazed him so horribly for the first few years of our relationship, but he survived turned into a great friend and one that I've been able to count on - going on twenty years now.

There's been a lot of "reaching across the aisle" musically lately. Elle King/Miranda Lambert, blackbear/Kane Brown, Adele/Chris Stapleton to name a few. What are your thoughts on stations and formats sharing artists?

I think it's terrific. I love when creative people push limits and break molds. I don't think the average listener cares about format silos - artists are artists and hits are hits.

If you had the time to send Thank You notes with a 10 dollar Starbucks gift card to some of your favorite people who have influenced you both personally and professionally, who would be on that list?

Gosh...there's not enough time in the day to name everyone, but the first names that pop in my head are Dan Bowen, my boss at Star 94 in Atlanta. He was the first programmer in my career to let me see behind the curtain and really teach me why we were doing what we were doing. Up to that point, my bosses would tell me what to do and I did it, Dan was the first person to really teach me. Don Benson had a huge impact on my career - he had a hand in bringing me to Atlanta and you just can't help but learn something new in every conversation with Don; he's so smart. In fact, I've been lucky to be able to be around a lot of really smart and generous people over the last 30 years; Mark Kanov, Steve Reynolds, Herndon Hasty, Pat Paxton, Jenny Skjodt, Doug Hammond - I owe all those people and so many more for helping me become who I am today.

**MONDAY
MORNING
INTEL**

***YOUR
WEEKLY
RESOURCE
FOR
MUSIC
RESEARCH***

MondayMorningIntel.com



CLICK HERE to E-MAIL Monday Morning Intel with your thoughts, suggestions, or ideas.

Sources included Amazon, Apple, You Tube, Google Play, Napster, Pandora, and Slacker, combined to provide you a pinpoint look at the top streaming songs.

AV RANK	ARTIST	TITLE	LABEL/IMPRINT	LISTEN LINKS
1	LIL NAS X & JACK HARLOW	INDUSTRY BABY	Columbia	PLAY VIDEO ▶
2	CKAY	Love Nwantiti (Ah Ah Ah)	Chocolate City/Atlantic	PLAY VIDEO ▶
3	THE KID LAROI & JUSTIN BIEBER	Stay	Columbia	PLAY VIDEO ▶
4	GAYLE	abcdefu	Atlantic	PLAY VIDEO ▶
5	ADELE	Easy On Me	Columbia	PLAY VIDEO ▶
6	JAYMES YOUNG	Infinity	Atlantic	PLAY VIDEO ▶
7	DOJA CAT	Woman	Kemosabe/RCA	PLAY VIDEO ▶
8	OLIVER TREE	Life Goes On	Atlantic	PLAY VIDEO ▶
9	ADELE	Oh My God	Columbia	PLAY VIDEO ▶
10	GLASS ANIMALS	Heat Waves	Republic	PLAY VIDEO ▶
11	AMAAARAE	Sad Girlz Luv Money f/K. Uchis	Platoon/Interscope	PLAY VIDEO ▶
12	DOJA CAT	Need To Know	Kemosabe/RCA	PLAY VIDEO ▶
13	SZA	I Hate U	TDE/RCA	PLAY VIDEO ▶
14	THE ANXIETY, WILLOW/TYLER COLE	Meet Me At Our Spot	MSFTS/Roc Nation	PLAY VIDEO ▶
15	BRUNO MARS/A . PAAK/SILK SONIC	Smokin Out The Window	Aftermath Ent./Atlantic	PLAY VIDEO ▶
16	THE WEEKND	Sacrifice	XO/Republic	PLAY VIDEO ▶
17	ACRAZE	Do It To It f/Cherish	Virgin Music	PLAY VIDEO ▶
18	ED SHEERAN	Shivers	Atlantic	PLAY VIDEO ▶
19	LAUREN SPENCER-SMITH	Fingers Crossed	---	PLAY VIDEO ▶
20	THE WALTERS	I Love You So	Warner	PLAY VIDEO ▶
21	MONEYBAGG YO	Scorpio	CMG/NLess/Interscope	PLAY VIDEO ▶
22	CHLOE	Have Mercy	Parkwood/Columbia	PLAY VIDEO ▶
23	TAYLOR SWIFT	All Too Well (Taylor's Version)	Republic	PLAY VIDEO ▶
24	YUNG BLEU	Beautiful Lies f/Kehlani	Vandross/RCA-EMPIRE	PLAY VIDEO ▶
25	LATTO	Big Energy	RCA	PLAY VIDEO ▶
26	JUSTIN BIEBER	Ghost	Def Jam	PLAY VIDEO ▶
27	ALESSO & KATY PERRY	When I'm Gone	10:22PM/ASW/Capitol	PLAY VIDEO ▶
28	NEIKED X MAE MULLER X POLO G	Better Days	Capitol	PLAY VIDEO ▶
29	CHARLIE PUTH	Light Switch	Atlantic	PLAY VIDEO ▶
30	POST MALONE & THE WEEKND	One Right Now	Republic	PLAY VIDEO ▶
31	GIVEON	For Tonight	Not So Fast/Epic	PLAY VIDEO ▶
32	LIL NAS X	Thats What I Want	Columbia	PLAY VIDEO ▶
33	DRAKE	Girls Want Girls f/Lil Baby	OVO/Republic	PLAY VIDEO ▶
34	ELLE KING & MIRANDA LAMBERT	Drunk (And I Don't Wanna Go..)	RCA	PLAY VIDEO ▶
35	SADIE JEAN	WYD Now?	SELENE	PLAY VIDEO ▶
36	POLO G	Bad Man (Smooth Criminal)	Columbia	PLAY VIDEO ▶
37	FIREBOY DML X ED SHEERAN	Peru	---	PLAY VIDEO ▶
38	BLXST	Chosen f/Ty Dolla \$ign & Tyga	Red Bull/EVGLE	PLAY VIDEO ▶
39	EMMY MELI	I Am Woman	Disruptor/Arista	PLAY VIDEO ▶
40	TIESTO & AVA MAX	The Motto	Atlantic	PLAY VIDEO ▶
41	AVRIL LAVIGNE F/BLACKBEAR	Love It When You Hate Me	DTA/EMG	PLAY VIDEO ▶
42	COLDPLAY X BTS	My Universe	Parlophone/Atlantic	PLAY VIDEO ▶
43	SWEDISH HOUSE MAFIA/THE WEEKND	Moth To A Flame	Republic	PLAY VIDEO ▶
44	JUICE WRLD	Wandered To LA f/Justin Bieber	Grade A Prod/Interscope	PLAY VIDEO ▶
45	BENSON BOONE	Ghost Town	Night Street/Warner	PLAY VIDEO ▶
46	BBNO\$	edamame f/Rich Brian	bbno\$/further.	PLAY VIDEO ▶
47	TAYLOR SWIFT	Message In A Bottle (Taylor's Version)	Republic	PLAY VIDEO ▶
48	PITBULL	I Feel Good f/A. Watts & DJWS	Mr. 305	PLAY VIDEO ▶
49	JONAS BROTHERS	Who's In Your Head	Republic	PLAY VIDEO ▶

Top 40 is tested every week for Popularity, Familiarity and Burn in myriad key demographics.
Each of four regions test 200 individuals for a total Sample Size of 800 per format.

RANK	ARTIST	TITLE	NEAST	MIDWEST	SOUTH	WEST
1	THE KID LAROI & JUSTIN BIEBER	Stay	1	1	1	1
2	LIL NAS X & JACK HARLOW	Industry Baby	3	2	3	3
3	ADELE	Easy On Me	2	3	6	2
4	GLASS ANIMALS	Heat Waves	6	4	2	5
5	GAYLE	abcdefu	5	5	4	4
6	DOJA CAT	Need To Know	4	6	5	6
7	LIL NAS X	Thats What I Want	7	10	10	8
8	SHEERAN, ED	Shivers	8	7	9	18
9	LATTO	Big Energy	14	9	7	9
10	ACRAZE FEAT. CHERISH	Do It To It	11	8	14	10
11	Bieber, Justin	Ghost	9	14	8	12
12	Chloe	Have Mercy	10	12	16	11
13	Eilish, Billie	Happier Than Ever	13	18	13	7
14	Meli, Emmy	I Am Woman	18	11	15	14
15	Blxst Feat. Ty Dolla \$Ign & Tyga	Chosen	12	15	17	17
16	SZA	I Hate U	25	13	19	13
17	Oliver Tree	Life Goes On	16	21	11	15
18	Giveon	For Tonight	22	16	12	26
19	Coldplay X BTS	My Universe	17	19	18	21
20	Post Malone & The Weeknd	One Right Now	15	20	20	23
21	Doja Cat	Woman	20	17	31	20
22	CKay	Love Nwantiti (Ah Ah Ah)	23	38	22	16
23	NEIKED Feat. Mae Muller Polo G	Better Days	21	31	24	25
24	Bruno Mars, Anderson .Paak, Silk Sonic	Smokin Out The Window	37	25	33	19
25	Swift, Taylor	All Too Well (Taylor's Version)	19	28	28	30
26	Boone, Benson	Ghost Town	32	29	23	27
27	John, Elton Feat. Dua Lipa	Cold Heart (PNAU Remix)	27	22	30	32
28	THE ANXIETY, WILLOW, Tyler Cole	Meet Me At Our Spot	26	23	35	29
29	Swedish House Mafia Feat. The Weeknd	Moth To A Flame	24	37	25	31
30	Alesso & Katy Perry	When I'm Gone	36	27	26	34
31	Jonas Brothers	Who's In Your Head	28	24	27	44
32	Spencer-Smith, Lauren	Fingers Crossed	35	39	36	22
33	Juice WRLD feat. Justin Bieber	Wandered To LA	42	35	21	35
34	Adele	Oh My God	41	26	41	28
35	Swift, Taylor	Message In A Bottle (Taylor's Version)	39	30	29	37
36	Lisa	Money	34	32	37	40
37	Tiesto & Ava Max	The Motto	31	41	39	24
38	bbno\$ & Rich Brian	Edamame	33	34	38	38
39	Wale Feat. J. Cole	Poke It Out	30	40	32	39
40	Pitbull Feat. Anthony Watts & Djws	I Feel Good	40	36	34	41
41	88Rising & BIBI	The Weekend	29	33	42	45
42	Charli XCX	Good Ones	38	42	43	33
43	The Weeknd	Sacrifice	43	45	40	36
44	Puth, Charlie	Light Switch	46	48	46	42
45	Anitta Feat. Saweetie	Faking Love	45	43	44	47
46	Lavigne, Avril Feat. blackbear	Love It When You Hate Me	48	47	45	43
47	Daisy The Great Feat. AJR	Record Player	44	46	47	49
48	The Walters	I Love You So	47	44	48	46
49	Fireboy DML X Ed Sheeran	Peru	49	50	50	48
50	ALYA	Pleasure Is Mine	50	49	49	50

Market Discovery: Songs showing significant consumer impact from Modern Media exposure but not yet charted Top 50 from radio airplay.

RANK	ARTIST	TITLE	LABEL
1	HARRY STYLES	Falling	Columbia
2	MEGAN THEE STALLION	Megan's Piano	1501 Certified/300 Ent.
3	BANNERS	Someone To You	Island/Republic
4	OLIVIA RODRIGO	brutal	Geffen/Interscope
5	HRVY	1 Day 2 Nights	BMG
6	THE WEEKND	Gasoline	XO/Republic
7	TAYLOR SWIFT	Wildest Dreams (Taylor's Vers)	Republic
8	YLONA GARCIA	Entertain Me	Paradise/88rising/12Tone
9	LAURA MARANO X GREY	Dance With You	Flip Phone
10	REGARD X KWABS	Signals	Epic
11	TAYLOR SWIFT	Love Story (Taylor's Version)	Republic
12	AREA21	Lovin' Every Minute	Hollywood
13	ALUNA, DIPLO & DURANTE	Forget About Me	Universal Music So.Africa
14	KODAK BLACK	Super Gremlin f/Syko Bob	Atlantic
15	R3HAB X LUKAS GRAHAM	Most People	CYB3RPVNK
16	TIESTO & KAROL G	Don't Be Shy	Atlantic
17	DABABY	Suge	SCMG/Interscope
18	DIRTY HEADS	Vacation f/Train (2021)	Better Noise
19	SKRILLEX/J BIEBER/D TOLIVER	Don't Go	Def Jam-Atlantic
20	ONEREPUBLIC	Someday	Mosley/Interscope
21	POST MALONE	Candy Paint	Republic
22	MAX & ALI GATIE	Butterflies	Warner
23	GUNNA	Pushin P f/Future, Young Thug	YSL/300 Ent.
24	HARIZ	Border	Prosperous Enterprises
25	RODDY RICCH	High Fashion f/Mustard	Atlantic
26	ASTRONOMERS	Bad Type	---
27	ANNE-MARIE & NIALl HORAN	Our Song	Capitol-Warner
28	THAT GIRL LAY LAY	I'm That f/Young Dylan	Nick Music
29	GOOD NEWZ GIRLS	Let It Snow	---
30	RODDY RICCH	Late At Night	Atlantic
31	HBZ, ANNA GREY, AGENT ZED	Aloha Hey	BMG
32	DJ KUBA & NEITAN X SKYTECH	Dancing	Spinnin'
33	MEDUZA	Tell It To My Heart f/Hozier	Republic
34	LIL BABY	On Me	QC/Motown/Capitol
35	BAD BUNNY	Callaita f/Tainy	Rimas
36	KANYE WEST	Believe What I Say	G.O.O.D./Def Jam
37	SUECO	Paralyzed	Atlantic
38	SWEDISH HOUSE MAFIA	It Gets Better	Republic
39	HARPER STARLING	No More What If	Star Groomer
40	POP SMOKE	For The Night f/LilBaby/DaBaby	Def-Cap-Int-Republic
41	TAYLOR SWIFT	22 (Taylor's Version)	Republic
42	CAPELLA GREY	Gyalis	Capitol
43	JASON DERULO	Acapulco	Atlantic
44	DREAMDOLL	Oh Shhh	District 18/Warner
45	JONAS BLUE & WHY DON'T WE	Don't Wake Me Up	Astralwerks/Capitol
46	DUA LIPA	Physical	Warner
47	FARRUKO/V. CARDENAS/DJ ADONIS	El Incomprendido	C. Fiber/Sony Music Latin
48	MONEYBAGG YO	Wockesha	CMG/NLess/Interscope
49	SICKICK	I Can Feel It	---
50	TESSA JOY	Bad News	Tessa Joy Music

ENCANTO

WE DON'T TALK ABOUT BRUNO

Last year Disney's animated musical "Encanto" lit up the box office and has proven to have a longer life than the theaters. The film salutes Colombian culture. The unlikely surprise hit "We Don't Talk about Bruno" blew up first on the UK charts and spread globally (in a good way) quickly. Now Bruno has found the US radio charts and is creating a new wave of viral success. Fun Fact: The Disney Soundtrack to 'Encanto' has been the first of it's kind to hit number one on the Billboard charts for over 2 years.



Faster Programming Intel From NuVoodoo.



The A.S.A.P Study



ACTIONABLE: A 10-minute interview is flexible but demands knowing the possible actions that might be taken.



SPEEDY: A 10-minute interview means the study gets into the field faster. A 300-person sample means that it will get out of the field faster. In the top 40 markets it's four weeks or less from approved questionnaire to presentation.



AFFORDABLE: An all-in cost of \$9500 minimizes risk and helps ensure a return on every budget dollar.



PERCEPTUAL STUDY: Quantitative research with scalable results from a well-designed, carefully-screened sample.

CHOOSE ONE FROM THREE STUDY DESIGNS:

Morning shows: What kind of show is in demand? Are there image leaders? What are the key audience benefits? Which images are contestable? Which features have gravity? Who are the hot personalities?

Comprehensive station health checkup: Are you optimally aligned among competitors? Strongest images? Most valuable images? Is your music dialed-in? Biggest threats? Easiest sources of new PI's?

Roadmap for music: The tightened interview allows testing of appeal for up to fifteen music styles, along with image questions.

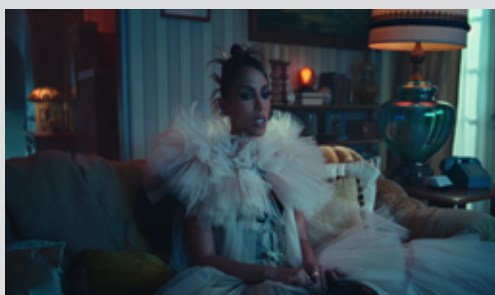


Check out these videos hand-picked by our staff!



THE CHAINSMOKERS - "HIGH"

High There! Here's a smoking hot video from a track that's blasted up the chart and is floating wwaayyy up there in the stratosphere! This clip is fun and is filled with "don't try this at home" moments. A fast hit, a dancable groove, a Twilight Zone reference and a embedded real-life message about addiction. Click here:



ANITTA - "BOYS DON'T CRY"

Run Anitta, RUN! MMI thinks your boyfriend is deadier than hell and is all zombied up! Our midnight movie-ish chart climbing girl is back with a cast of characters that may or may not currently be using oxygen on a regular basis. We have faith that the scantily clad Anitta will escape all these bloodsuckers in the end. Grab some popcorn and click here:



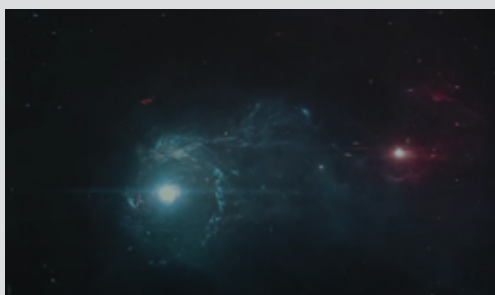
JOHN MAYER - "WILD BLUE"

From The MMI Request Line: Caller number 7 asks why we've never posted a John Mayer video. After all, he is on tour and has a new happy colorful clip to boot. When looking back, we found that the selector dropped it in the last hour so we thought we'd get it on for you right after these 2 words.. click here:



GAYLE - "ABCDEFU"

MMI Online Power Rotation Station: We're proud of the kids in the MMI on-line digital-groove dept who brought this clip to the MMI Music Meeting (AKATMMIMM) way like, last year. But face it, the smash was hatched on the web and has grown to the monster hit that we know and love. There's a beauty to the realistic vibe of the video that teaches us to never leave the key under the mat for too long. Click here:



POO BEAR - "DISTANT SHORE"

We love Poo Bear for many reasons. Justin B's frequent side-kick and collaborator has his own groove happening with "Distant Shore" which is all over the Dance charts. We also like that Wikipedia makes darn sure there is no confusion with the fictional bear named Winnie-the-Pooh. Thanks for clearing that up. Click here:



CHARTS/POWERS:

1 AIRPLAY is calculated by Trailing 14 Days of radio airplay on the Key Influencer radio stations – Top 157 radio stations by Average Quarter Hour. Charts are weighted using currently assigned points in Mediabase...100% point value for Morning Drive, 90% for Afternoon Drive, 80% for Mid-days, 70% for nights, 50% for Overnights.

2 AIRSCORE: THE AIRPLAY INTEL 3.0 RETENTION SCORE predicts listener tune-in/tune-out on song play by contemplating the trend over time relationship between local and national airplay, local/regional callout, and audio and video streaming.

3 NATIONAL CALLOUT contemplates more than 1,000 respondents weekly in four regions geographically equivalent over the trailing 14 days of calls.

4 STREAMING, AUDIO contemplates trailing 14 days of all streaming. Songs with insufficient data are designated with an "x". These songs do not affect the Total Performance Score in any way.

5 STREAMING, VIDEO contemplates trailing 14 days of all streaming. Songs with insufficient data are designated with an "x". These songs do not affect the Total Performance Score in any way.

6 SALES is base on 14 days trailing results. Songs with insufficient data are designated as PENDING. Pending songs do not affect Total Performance Score in any way.

HOT ZONE / DEVELOPING

All five components listed above are contemplated. Songs moving up and increasing significantly in TWO or more categories are designated in the Hot Zone. Other new releases are designated as Developing.

RECURRENTS

Recurrents are a simple calculation of songs that have trended downward and no longer qualify for Current status. Trailing 14 days are contemplated, along with 6 weeks of Retention Data, and are computed on a 50/50 level of importance.

ACTION

Songs that are testing either in Callout or in Retention significantly higher than current Airplay rank. These songs are considered UNDEREXPOSED and deserving generally of greater airplay.

STREAMING AUDIO, VIDEO AND SALES

Streaming Audio and Video, and Sales, are based on trailing 14 days data. All major streaming services are used wherever possible, along with sales.

NOTE: Hot AC Callout information is provided as stand-alone information. This data does not factor into the main chart rankings in any way.

CALL US at
818-699-6400
or EMAIL
contact@mmi2020.com

MONDAY MORNING INTEL

© AIRPLAY INTELLIGENCE, LLC, 2021,
No part of the materials available through the
MONDAY MORNING INTEL presentation
may be copied, photocopied, reproduced,
translated or reduced to any electronic
medium or machine-readable form, in
whole or in part, without prior written
consent of AIRPLAY INTELLIGENCE, LLC.
Any other reproduction in any form without
permission of AIRPLAY INTELLIGENCE, LLC
is prohibited. All materials contained on this
presentation are protected by United States
copyright law and may not be reproduced,
distributed, transmitted, displayed, published or
broadcast without the prior written permission of
AIRPLAY INTELLIGENCE, LLC. 2021.

PRIVACY POLICY
[Click Here](#)



THANK YOU
from the entire staff:

PUBLISHERS:

ZEN CZAR

Rich Meyer

CHIEF WRANGLER

Steve Lehman

**MARKETING, PROMOTION
& Magic Fueled by Studio2Bee**
MASTERS OF THE SUN

Skip Bishop

Butch Waugh

Kylee Laynee Higgins

RESEARCH TEAM
**PEOPLE WHO ACTUALLY
DO THE WORK**

Richard R. Deitemeyer

Kate Collins

Brittany Whitney

Brenda Manney

Todd Morris

GRAPHIC DESIGN
EGO Design

PYTHON POWER RANGER
Trent Trento

OPERATIONS
Kylee Laynee Higgins

PAW POWER
NOT IN MY BOWL

Heidi Dog

Monkey Dog

Cooper