

MONDAY
MORNING
INTEL

FIREBOY DML

ED SHEERAN

PERU



IMPACTING TOP 40 NOW

Headed to #40

Top20 Rhythm

Over 250m Streams

Top25 Shazam

@fireboydml
@EMPIRE

TOP 40 *EDITION*

FEBRUARY 14, 2022

JUSTIN BIEBER

H
O
T
T
O

TOP 40: 3*
HOT AC: 6*
AC: 11*



MONDAY MORNING INTEL

FEBRUARY 14, 2022

TABLE OF CONTENTS

4 #1 SONGS THIS WEEK

5 POWERS

6 ACTION/RECURRENTS

8 HOTZONE/DEVELOPING

9 VIDEO STREAMING

10 TOP 40 CALLOUT

11 FUTURE TRACKS

12 INTELESCOPE

14 INTELEVISION

15 METHODOLOGY

16 THE BACK PAGE

MMI - A MODERN DAY MUSIC RESEARCH SYSTEM

**MONDAY
MORNING
INTEL**

#1

SONGS THIS WEEK
BY MMI COMPOSITE CATEGORIES **2.14.22**

AIRPLAY

GLASS ANIMALS "HEAT WAVES"

RETENTION

GLASS ANIMALS "HEAT WAVES"

CALLOUT

ALTEGO/BRITNEY SPEARS/GINUWINE "TOXIC PONY"

AUDIO

ENCANTO (CAST) "WE DON'T TALK ABOUT BRUNO"

VIDEO

ENCANTO (CAST) "WE DON'T TALK ABOUT BRUNO"

SALES

ENCANTO (CAST) "WE DON'T TALK ABOUT BRUNO"

COMPOSITE

GAYLE "ABCDEFU"

MondayMorningIntel.com



CLICK HERE to E-MAIL Monday Morning Intel with your thoughts, suggestions, or ideas.

**MONDAY
MORNING
INTEL**

Weighted Airplay, Retention Scores, Streaming Scores, and Sales Scores this week combined and equally weighted deviser Powers Rankers.

| TWRK AIRPLAY | TWRK RETENTION | TWRK CALLOUT | TWRK AUDIO | TWRK VIDEO | TWRK SALES | TWCOMP RANK | ARTIST | TITLE | LABEL |
|-----------------|-------------------|-----------------|---------------|---------------|---------------|----------------|--------------------------------|--------------------------------|---------------------------|
| 7 | 4 | 5 | 4 | 5 | 2 | 1 | GAYLE | abcdefu | Arthouse/Atlantic |
| 1 | 1 | 4 | 3 | 11 | 7 | 2 | GLASS ANIMALS | Heat Waves | Republic |
| 4 | 2 | 7 | 6 | 8 | 4 | 3 | ADELE | Easy On Me | Columbia |
| 8 | 3 | 2 | 5 | 4 | 12 | 4 | THE KID LAROI & JUSTIN BIEBER | Stay | Columbia |
| 10 | 9 | 3 | 7 | 3 | 15 | 5 | LIL NAS X & JACK HARLOW | INDUSTRY BABY | Columbia |
| 6 | 6 | 13 | 11 | 16 | 3 | 6 | ED SHEERAN | Shivers | Atlantic |
| 3 | 5 | 6 | 12 | 12 | 26 | 7 | DOJA CAT | Need To Know | Kemosabe/RCA |
| 2 | 7 | 8 | 18 | 18 | 10 | 8 | LIL NAS X | Thats What I Want | Columbia |
| 5 | 8 | 9 | 15 | 26 | 8 | 9 | JUSTIN BIEBER | Ghost | Def Jam |
| 14 | 11 | 19 | 14 | 7 | 32 | 10 | DOJA CAT | Woman | Kemosabe/RCA |
| 11 | 17 | 28 | 19 | 14 | 9 | 11 | THE ANXIETY, WILLOW/TYLER COLE | Meet Me At Our Spot | MSFTS/Roc Nation |
| 19 | 13 | 12 | 26 | 27 | 6 | 12 | LATTO | Big Energy | RCA |
| 20 | 21 | 23 | 8 | 21 | 11 | 13 | LAUREN SPENCER-SMITH | Fingers Crossed | Island/Republic |
| 33 | 32 | 11 | 9 | 6 | 16 | 14 | IMAGINE DRAGONS | Enemy From League Of Legends | KidinaKorner/Interscope |
| 17 | 16 | 10 | 28 | 22 | 17 | 15 | ACRAZE | Do It To It f/Cherish | Thrive/Virgin |
| 40 | 45 | 20 | 1 | 1 | 1 | 16 | ENCANTO (CAST) | We Don't Talk About Bruno | Walt Disney |
| 12 | 12 | 21 | 16 | 30 | 22 | 17 | NEIKED X MAE MULLER X POLO G | Better Days | Columbia-Capitol |
| 9 | 10 | 17 | 25 | 32 | 24 | 18 | POST MALONE & THE WEEKND | One Right Now | Republic |
| 13 | 15 | 24 | 17 | 33 | 13 | 19 | ADELE | Oh My God | Columbia |
| 32 | 25 | 15 | 10 | 13 | 28 | 20 | SZA | I Hate U | TDE/RCA |
| 24 | 20 | 31 | 23 | 2 | 31 | 21 | CKAY | Love Nwantiti (Ah Ah Ah) | Chocolate City/Atlantic |
| 27 | 23 | 27 | 24 | 15 | 21 | 22 | BRUNO MARS/A . PAAK/SILK SONIC | Smokin Out The Window | Aftermath Ent./Atlantic |
| 16 | 24 | 38 | 20 | 19 | 25 | 23 | CHARLIE PUTH | Light Switch | Atlantic |
| 15 | 22 | 35 | 21 | 31 | 27 | 24 | THE WEEKND | Sacrifice | XO/Republic |
| 21 | 28 | 34 | 27 | 28 | 19 | 25 | THE CHAINSMOKERS | High | Disruptor/Columbia |
| 23 | 18 | 14 | 44 | 24 | 40 | 26 | CHLOE | Have Mercy | Parkwood/Columbia |
| 22 | 19 | 22 | 33 | 35 | 38 | 27 | GIVEON | For Tonight | Not So Fast/Epic |
| 30 | 27 | 16 | 34 | 39 | 35 | 28 | EMMY MELI | I Am Woman | Disruptor/Arista |
| 18 | 14 | 32 | 38 | 47 | 30 | 29 | TAYLOR SWIFT | Message In A Bottle (Taylor's | Republic |
| 49 | 46 | x | 30 | 10 | 5 | 30 | JAYMES YOUNG | Infinity | Atlantic/EMG |
| 28 | 30 | x | 40 | 42 | 20 | 31 | ALESSO & KATY PERRY | When I'm Gone | 10:22PM/ASW/Capitol |
| 38 | 42 | 1 | 48 | 25 | 29 | 32 | ALTEGO/BRITNEY SPEARS/GINUWINE | Toxic Pony | RCA |
| 34 | 36 | 33 | 31 | 41 | 14 | 33 | TIESTO & AVA MAX | The Motto | Atlantic |
| 26 | 29 | 26 | 39 | 43 | 36 | 34 | SWEDISH HOUSE MAFIA/THE WEEKND | Moth To A Flame | Republic |
| 29 | 31 | 18 | 41 | 40 | 41 | 35 | BLXST | Chosen f/Ty Dolla \$ign & Tyga | Red Bull/EVGL |
| 36 | 35 | 40 | 13 | 23 | 46 | 36 | THE WALTERS | I Love You So | Warner |
| 25 | 26 | 25 | 43 | 46 | 42 | 37 | BENSON BOONE | Ghost Town | Night Street/Warner |
| 44 | 43 | 29 | 22 | 29 | 39 | 38 | TAYLOR SWIFT | All Too Well (Taylor's Version | Republic |
| 48 | x | x | 36 | 34 | 18 | 39 | ELLE KING & MIRANDA LAMBERT | Drunk (And I Don't Wanna Go..) | RCA/Columbia Nashville |
| 31 | 34 | 30 | 37 | 44 | 43 | 40 | JUICE WRLD | Wandered To LA f/Justin Bieber | GradeA/Def Jam-Interscope |
| 41 | 39 | 43 | 32 | 37 | 34 | 41 | FIREBOY DML X ED SHEERAN | Peru | YBNL/EMPIRE |
| 50 | 48 | x | 2 | 9 | 50 | 42 | GUNNA | Pushin P f/Future, Young Thug | YSL/300 Ent. |
| 46 | x | x | 35 | 17 | 47 | 43 | AMAARAE | Sad Girlz Luv Money f/K. Uchis | Platoon/Interscope |
| 37 | 33 | 36 | 50 | 49 | 23 | 44 | PITBULL | I Feel Good f/A. Watts & DJWS | Mr. 305 |
| 45 | 41 | x | 29 | 36 | 48 | 45 | DRAKE | Girls Want Girls f/Lil Baby | OVO/Republic |
| 43 | 44 | 39 | 45 | 38 | 37 | 46 | CHRIS BROWN | Iffy | RCA |
| 39 | 40 | 41 | 49 | 48 | 33 | 47 | DAISY THE GREAT X AJR | Record Player | S-Curve/Hollywood |
| 47 | 47 | x | 42 | 20 | 45 | 48 | MONEYBAGG YO | Scorpio | CMG/NLess/Interscope |
| 42 | 38 | 37 | 46 | 45 | 49 | 49 | NIKI | Every Summertime | MRVL/Hollywood/Interscope |
| 35 | 37 | 42 | 47 | 50 | 44 | 50 | AVRIL LAVIGNE F/BLACKBEAR | Love It When You Hate Me | DTA/EMG |

Songs that are out performing current airplay results and a worth a second look in terms of airplay acceleration.

| TW RANK | TW RK AIRPLAY | TWMMI COMPOSITE | ACTION FACTOR | ARTIST | TITLE | LABEL/IMPRINT |
|---------|---------------|-----------------|---------------|--------------------------------|--------------------------------|-------------------------|
| 1 | 40 | 16 | 24 | ENCANTO (CAST) | We Don't Talk About Bruno | Walt Disney |
| 2 | 49 | 30 | 19 | JAYMES YOUNG | Infinity | Atlantic/EMG |
| 3 | 33 | 14 | 19 | IMAGINE DRAGONS | Enemy From League Of Legends | KidinaKorner/Interscope |
| 4 | 32 | 20 | 12 | SZA | I Hate U | TDE/RCA |
| 5 | 48 | 39 | 9 | ELLE KING & MIRANDA LAMBERT | Drunk (And I Don't Wanna Go..) | RCA/Columbia Nashville |
| 6 | 50 | 42 | 8 | GUNNA | Pushin P f/Future, Young Thug | YSL/300 Ent. |
| 7 | 19 | 12 | 7 | LATTO | Big Energy | RCA |
| 8 | 20 | 13 | 7 | LAUREN SPENCER-SMITH | Fingers Crossed | Island/Republic |
| 9 | 7 | 1 | 6 | GAYLE | abccdefu | Arthouse/Atlantic |
| 10 | 38 | 32 | 6 | ALTEGO/BRITNEY SPEARS/GINUWINE | Toxic Pony | RCA |
| 11 | 44 | 38 | 6 | TAYLOR SWIFT | All Too Well (Taylor's Version | Republic |

Songs that have significantly downtrended on the Powers charts are reclassified as Recurent and can remain there for up to two years, before being reclassified as Gold.

| RANK TW | ARTIST | TITLE | LABEL/IMPRINT |
|---------|-------------------------------|--------------------------------|---------------------------|
| 1 | ED SHEERAN | Bad Habits | Atlantic |
| 2 | OLIVIA RODRIGO | good 4 u | Geffen/Interscope |
| 3 | DUA LIPA | Levitating | Interscope-Warner |
| 4 | DOJA CAT | Kiss Me More f/Sza | Kemosabe/RCA |
| 5 | LIL NAS X | MONTERO (Call Me By Your Name) | Columbia |
| 6 | ELTON JOHN & DUA LIPA | Cold Heart | Mercury/Warner-Interscope |
| 7 | DOJA CAT | You Right f/The Weeknd | XO/Kemosabe/Republic-RCA |
| 8 | THE WEEKND | Save Your Tears | XO/Republic |
| 9 | 24KGOLDN | Mood f/Iann Dior | RECORDS/Columbia |
| 10 | ARIANA GRANDE | positions | Republic |
| 11 | MANESKIN | Beggin | Sony Music Latin/Arista |
| 12 | THE KID LAROI | Without You with Miley Cyrus | Columbia |
| 13 | THE WEEKND | Blinding Lights | XO/Republic |
| 14 | POST MALONE | Circles | Republic |
| 15 | BILLIE EILISH | Happier Than Ever | Darkroom/Interscope |
| 16 | OLIVIA RODRIGO | deja vu | Geffen/Interscope |
| 17 | HARRY STYLES | Adore You | Columbia |
| 18 | HARRY STYLES | Watermelon Sugar | Columbia |
| 19 | ARIANA GRANDE | 34+35 | Republic |
| 20 | MACHINE GUN KELLY & BLACKBEAR | My Ex's Best Friend | Bad Boy/Interscope |
| 21 | ARIANA GRANDE | pov | Republic |
| 22 | DUA LIPA | Break My Heart | Warner |
| 23 | DUA LIPA | Don't Start Now | Warner |
| 24 | CHRIS BROWN X YOUNG THUG | Go Crazy | Chris Brown/300 Ent.-RCA |
| 25 | BLACKBEAR | Hot Girl Bummer | Beartrap/Alamo/Interscope |
| 26 | TATE MCRAE | You Broke Me First | RCA |
| 27 | DOJA CAT | Say So | Kemosabe/RCA |
| 28 | SAWEETIE | Best Friend f/Doja Cat | Icy/RCA-Warner |
| 29 | OLIVIA RODRIGO | drivers license | Geffen/Interscope |
| 30 | THE WEEKND | Take My Breath | XO/Republic |

FOR KING + COUNTRY RELATE

I M P A C T I N G N O W

37 TO 33* @ MEDIABASE HOT AC!

CONSUMPTION UP 37%!

R3HAB REMIX OF "RELATE" OUT NOW

BIG PLAYLIST ADDS AT APPLE MUSIC, SPOTIFY, AND AMAZON MUSIC

MULTIPLE MAJOR CITY ARENA DATES IN 2022

1.8 BILLION+ ARTIST LIFETIME STREAMS



Songs that are performing higher than most with all of the heaviest increases in all MMI Components.

| | ARTIST | TITLE | LABEL/IMPRINT |
|---------|---------------------------|------------------------------|---------------------------|
| HOTZONE | THE CHAINSMOKERS | High | Disruptor/Columbia |
| HOTZONE | ANITTA | Boys Don't Cry | Warner |
| HOTZONE | EM BEIHOLD | Numb Little Bug | Republic |
| HOTZONE | MEDUZA | Tell It To My Heart f/Hozier | Republic |
| HOTZONE | CHRIS BROWN | Iffy | RCA |
| HOTZONE | IMAGINE DRAGONS | Enemy From League Of Legends | KidinaKorner/Interscope |
| HOTZONE | NIKI | Every Summertime | MRVL/Hollywood/Interscope |
| HOTZONE | ENCANTO (CAST) | We Don't Talk About Bruno | Walt Disney |
| HOTZONE | CHARLIE PUTH | Light Switch | Atlantic |
| HOTZONE | TIESTO & AVA MAX | The Motto | Atlantic |
| HOTZONE | LAUREN SPENCER-SMITH | Fingers Crossed | Island/Republic |
| HOTZONE | LATTO | Big Energy | RCA |
| HOTZONE | ALESSO & KATY PERRY | When I'm Gone | 10:22PM/ASW/Capitol |
| HOTZONE | AVRIL LAVIGNE F/BLACKBEAR | Love It When You Hate Me | DTA/EMG |
| HOTZONE | DAISY THE GREAT X AJR | Record Player | S-Curve/Hollywood |
| HOTZONE | JENA ROSE | Checkmate | Gem Street Music |

New music that is increasing at a moderate rate in all MMI Components — Upward Trending Music.

| | ARTIST | TITLE | LABEL/IMPRINT |
|------------|--------------------------------|--------------------------------|---------------------------|
| DEVELOPING | DOJA CAT | Woman | Kemosabe/RCA |
| DEVELOPING | BENSON BOONE | Ghost Town | Night Street/Warner |
| DEVELOPING | ALTEGO/BRITNEY SPEARS/GINUWINE | Toxic Pony | RCA |
| DEVELOPING | FIREBOY DML X ED SHEERAN | Peru | YBNL/EMPIRE |
| DEVELOPING | ALYA | Pleasure Is Mine | Independent |
| DEVELOPING | THE ANXIETY, WILLOW/TYLER COLE | Meet Me At Our Spot | MSFTS/Roc Nation |
| DEVELOPING | THE WEEKND | Sacrifice | XO/Republic |
| DEVELOPING | ACRAZE | Do It To It f/Cherish | Thrive/Virgin |
| DEVELOPING | JUICE WRLD | Wandered To LA f/Justin Bieber | GradeA/Def Jam-Interscope |
| DEVELOPING | SZA | I Hate U | TDE/RCA |
| DEVELOPING | ADELE | Oh My God | Columbia |
| DEVELOPING | BLXST | Chosen f/Ty Dolla \$ign & Tyga | Red Bull/EVGLE |
| DEVELOPING | EMMY MELI | I Am Woman | Disruptor/Arista |
| DEVELOPING | 88RISING & BIBI | The Weekend | 88rising |
| DEVELOPING | THE WALTERS | I Love You So | Warner |

Sources included Amazon, Apple, You Tube, Google Play, Napster, Pandora, and Slacker, combined to provide you a pinpoint look at the top streaming songs.

| AV RANK | ARTIST | TITLE | LABEL/IMPRINT | LISTEN LINKS |
|---------|--------------------------------|--|---------------------------|------------------------------|
| 1 | ENCANTO (CAST) | We Don't Talk About Bruno | Walt Disney | PLAY VIDEO ▶ |
| 2 | CKAY | Love Nwantiti (Ah Ah Ah) | Chocolate City/Atlantic | PLAY VIDEO ▶ |
| 3 | LIL NAS X & JACK HARLOW | INDUSTRY BABY | Columbia | PLAY VIDEO ▶ |
| 4 | THE KID LAROI & JUSTIN BIEBER | Stay | Columbia | PLAY VIDEO ▶ |
| 5 | GAYLE | abcdefu | Atlantic | PLAY VIDEO ▶ |
| 6 | IMAGINE DRAGONS | Enemy From League Of Legends | KidinaKorner/Interscope | PLAY VIDEO ▶ |
| 7 | DOJA CAT | Woman | Kemosabe/RCA | PLAY VIDEO ▶ |
| 8 | ADELE | Easy On Me | Columbia | PLAY VIDEO ▶ |
| 9 | GUNNA | Pushin P f/Future, Young Thug | YSL/300 Ent. | PLAY VIDEO ▶ |
| 10 | JAYMES YOUNG | Infinity | Atlantic | PLAY VIDEO ▶ |
| 11 | GLASS ANIMALS | Heat Waves | Republic | PLAY VIDEO ▶ |
| 12 | DOJA CAT | Need To Know | Kemosabe/RCA | PLAY VIDEO ▶ |
| 13 | SZA | I Hate U | TDE/RCA | PLAY VIDEO ▶ |
| 14 | THE ANXIETY, WILLOW/TYLER COLE | Meet Me At Our Spot | MSFTS/Roc Nation | PLAY VIDEO ▶ |
| 15 | BRUNO MARS/A . PAAK/SILK SONIC | Smokin Out The Window | Aftermath Ent./Atlantic | PLAY VIDEO ▶ |
| 16 | ED SHEERAN | Shivers | Atlantic | PLAY VIDEO ▶ |
| 17 | AMAAARAE | Sad Girlz Luv Money f/K. Uchis | Platoon/Interscope | PLAY VIDEO ▶ |
| 18 | LIL NAS X | Thats What I Want | Columbia | PLAY VIDEO ▶ |
| 19 | CHARLIE PUTH | Light Switch | Atlantic | PLAY VIDEO ▶ |
| 20 | MONEYBAGG YO | Scorpio | CMG/NLess/Interscope | PLAY VIDEO ▶ |
| 21 | LAUREN SPENCER-SMITH | Fingers Crossed | --- | PLAY VIDEO ▶ |
| 22 | ACRAZE | Do It To It f/Cherish | Virgin Music | PLAY VIDEO ▶ |
| 23 | THE WALTERS | I Love You So | Warner | PLAY VIDEO ▶ |
| 24 | CHLOE | Have Mercy | Parkwood/Columbia | PLAY VIDEO ▶ |
| 25 | ALTEGO/BRITNEY SPEARS/GINUWINE | Toxic Pony | RCA | PLAY VIDEO ▶ |
| 26 | JUSTIN BIEBER | Ghost | Def Jam | PLAY VIDEO ▶ |
| 27 | LATTO | Big Energy | RCA | PLAY VIDEO ▶ |
| 28 | THE CHAINSMOKERS | High | Disruptor/Columbia | PLAY VIDEO ▶ |
| 29 | TAYLOR SWIFT | All Too Well (Taylor's Version) | Republic | PLAY VIDEO ▶ |
| 30 | NEIKED X MAE MULLER X POLO G | Better Days | Capitol | PLAY VIDEO ▶ |
| 31 | THE WEEKND | Sacrifice | XO/Republic | PLAY VIDEO ▶ |
| 32 | POST MALONE & THE WEEKND | One Right Now | Republic | PLAY VIDEO ▶ |
| 33 | ADELE | Oh My God | Columbia | PLAY VIDEO ▶ |
| 34 | ELLE KING & MIRANDA LAMBERT | Drunk (And I Don't Wanna Go..) | RCA | PLAY VIDEO ▶ |
| 35 | GIVEON | For Tonight | Not So Fast/Epic | PLAY VIDEO ▶ |
| 36 | DRAKE | Girls Want Girls f/Lil Baby | OVO/Republic | PLAY VIDEO ▶ |
| 37 | FIREBOY DML X ED SHEERAN | Peru | --- | PLAY VIDEO ▶ |
| 38 | CHRIS BROWN | Iffy | RCA | PLAY VIDEO ▶ |
| 39 | EMMY MELI | I Am Woman | Disruptor/Arista | PLAY VIDEO ▶ |
| 40 | BLXST | Chosen f/Ty Dolla \$ign & Tyga | Red Bull/EVGLE | PLAY VIDEO ▶ |
| 41 | TIESTO & AVA MAX | The Motto | Atlantic | PLAY VIDEO ▶ |
| 42 | ALESSO & KATY PERRY | When I'm Gone | 10:22PM/ASW/Capitol | PLAY VIDEO ▶ |
| 43 | SWEDISH HOUSE MAFIA/THE WEEKND | Moth To A Flame | Republic | PLAY VIDEO ▶ |
| 44 | JUICE WRLD | Wandered To LA f/Justin Bieber | Grade A Prod/Interscope | PLAY VIDEO ▶ |
| 45 | NIKI | Every Summertime | MRVL/Hollywood/Interscope | PLAY VIDEO ▶ |
| 46 | BENSON BOONE | Ghost Town | Night Street/Warner | PLAY VIDEO ▶ |
| 47 | TAYLOR SWIFT | Message In A Bottle (Taylor's Version) | Republic | PLAY VIDEO ▶ |
| 48 | DAISY THE GREAT X AJR | Record Player | S-Curve/Hollywood | PLAY VIDEO ▶ |
| 49 | PITBULL | I Feel Good f/A. Watts & DJWS | Mr. 305 | PLAY VIDEO ▶ |
| 50 | AVRIL LAVIGNE F/BLACKBEAR | Love It When You Hate Me | DTA/EMG | PLAY VIDEO ▶ |

Top 40 is tested every week for Popularity, Familiarity and Burn in myriad key demographics.
Each of four regions test 200 individuals for a total Sample Size of 800 per format.

| RANK | ARTIST | TITLE | NEAST | MIDWEST | SOUTH | WEST |
|------|--|--|-------|---------|-------|------|
| 1 | ALTEGO X BRITNEY SPEARS X GINUWINE | Toxic Pony | 2 | 1 | 2 | 1 |
| 2 | THE KID LAROI & JUSTIN BIEBER | Stay | 1 | 4 | 1 | 3 |
| 3 | LIL NAS X & JACK HARLOW | Industry Baby | 8 | 2 | 3 | 4 |
| 4 | GLASS ANIMALS | Heat Waves | 3 | 3 | 5 | 5 |
| 5 | GAYLE | abcdefu | 5 | 5 | 6 | 2 |
| 6 | DOJA CAT | Need To Know | 4 | 6 | 4 | 6 |
| 7 | ADELE | Easy On Me | 7 | 7 | 7 | 7 |
| 8 | LIL NAS X | Thats What I Want | 9 | 8 | 8 | 12 |
| 9 | BIEBER, JUSTIN | Ghost | 6 | 9 | 12 | 13 |
| 10 | ACRAZE FEAT. CHERISH | Do It To It | 10 | 13 | 11 | 10 |
| 11 | Imagine Dragons X JID | Enemy | 12 | 11 | 13 | 8 |
| 12 | Latto | Big Energy | 15 | 12 | 9 | 9 |
| 13 | Sheeran, Ed | Shivers | 11 | 10 | 10 | 19 |
| 14 | Chloe | Have Mercy | 14 | 14 | 16 | 16 |
| 15 | SZA | I Hate U | 22 | 17 | 14 | 11 |
| 16 | Meli, Emmy | I Am Woman | 19 | 16 | 20 | 15 |
| 17 | Post Malone & The Weeknd | One Right Now | 13 | 19 | 19 | 17 |
| 18 | Oliver Tree | Life Goes On | 31 | 15 | 15 | 20 |
| 19 | Blxst Feat. Ty Dolla \$Ign & Tyga | Chosen | 16 | 21 | 18 | 21 |
| 20 | Doja Cat | Woman | 18 | 18 | 26 | 14 |
| 21 | Cast Of Encanto | We Don't Talk About Bruno | 20 | 22 | 23 | 18 |
| 22 | NEIKED Feat. Mae Muller Polo G | Better Days | 17 | 20 | 22 | 22 |
| 23 | Giveon | For Tonight | 23 | 23 | 17 | 29 |
| 24 | Spencer-Smith, Lauren | Fingers Crossed | 21 | 32 | 28 | 23 |
| 25 | Alesso & Katy Perry | When I'm Gone | 26 | 26 | 21 | 28 |
| 26 | Adele | Oh My God | 33 | 24 | 33 | 24 |
| 27 | Boone, Benson | Ghost Town | 32 | 31 | 24 | 27 |
| 28 | Swedish House Mafia Feat. The Weeknd | Moth To A Flame | 29 | 28 | 31 | 32 |
| 29 | Bruno Mars, Anderson .Paak, Silk Sonic | Smokin Out The Window | 34 | 35 | 25 | 25 |
| 30 | THE ANXIETY, WILLOW, Tyler Cole | Meet Me At Our Spot | 28 | 29 | 29 | 38 |
| 31 | Swift, Taylor | All Too Well (Taylors Version) | 25 | 34 | 36 | 30 |
| 32 | Jonas Brothers | Who's In Your Head | 24 | 25 | 37 | 40 |
| 33 | Juice WRLD feat. Justin Bieber | Wandered To LA | 35 | 27 | 27 | 37 |
| 34 | CKay | Love Nwantiti (Ah Ah Ah) | 30 | 42 | 32 | 26 |
| 35 | Swift, Taylor | Message In A Bottle (Taylor's Version) | 27 | 33 | 38 | 45 |
| 36 | 88Rising & BIBI | The Weekend | 38 | 30 | 40 | 42 |
| 37 | Tiesto & Ava Max | The Motto | 39 | 37 | 39 | 39 |
| 38 | Chainsmokers | High | 36 | 40 | 30 | 43 |
| 39 | The Weeknd | Sacrifice | 37 | 36 | 46 | 31 |
| 40 | Pitbull Feat. Anthony Watts & Djws | I Feel Good | 41 | 38 | 35 | 44 |
| 41 | Charli XCX | Good Ones | 40 | 43 | 42 | 33 |
| 42 | Niki | Every Summertime | 42 | 45 | 41 | 34 |
| 43 | Puth, Charlie | Light Switch | 43 | 39 | 45 | 36 |
| 44 | Brown, Chris | IFFY | 48 | 41 | 47 | 35 |
| 45 | Anitta | Boys Don't Cry | 45 | 46 | 34 | 48 |
| 46 | The Walters | I Love You So | 46 | 48 | 44 | 41 |
| 47 | Daisy The Great Feat. AJR | Record Player | 44 | 47 | 43 | 47 |
| 48 | Lavigne, Avril Feat. blackbear | Love It When You Hate Me | 47 | 44 | 48 | 46 |
| 49 | Fireboy DML X Ed Sheeran | Peru | 49 | 49 | 49 | 49 |
| 50 | Alya | Pleasure Is Mine | 50 | 50 | 50 | 50 |

Market Discovery: Songs showing significant consumer impact from Modern Media exposure but not yet charted Top 50 from radio airplay.

| RANK | ARTIST | TITLE | LABEL |
|------|---------------------------|--------------------------------|---------------------------|
| 1 | TATE MCRAE | feel like s**t | RCA |
| 2 | TAI'AYSHA | One Night Ting f/Saweezie | Atlantic |
| 3 | TAYLOR SWIFT | Run (Taylor's Version) | Republic |
| 4 | ROSALIA | LA FAMA f/The Weeknd | Columbia |
| 5 | LABRINTH | All For Us | Syco/RCA |
| 6 | OLIVIA RODRIGO | brutal | Geffen/Interscope |
| 7 | ALUNA, DIPLO & DURANTE | Forget About Me | Universal Music So.Africa |
| 8 | WALKER HAYES | U Gurl | Monument |
| 9 | J BALVIN & SKRILLEX | In Da Getto | Suenos Globales/UMLE |
| 10 | FLO RIDA | Wait | Artist Partner Group |
| 11 | TAYLOR SWIFT | Wildest Dreams (Taylor's Vers) | Republic |
| 12 | YOUNG THUG | Livin It Up f/Post Malone & .. | YSL/300 Ent. |
| 13 | ADELE | Can I Get It | Columbia |
| 14 | R3HAB X LUKAS GRAHAM | Most People | CYB3RPVNK |
| 15 | WALKER HAYES | AA | Monument |
| 16 | MEGAN THEE STALLION | Megan's Piano | 1501 Certified/300 Ent. |
| 17 | BANNERS | Someone To You | Island/Republic |
| 18 | 24KGOLDN | More Than Friends | RECORDS/Columbia |
| 19 | DABABY | Suge | SCMG/Interscope |
| 20 | SADIE JEAN | WYD Now? | SELENE |
| 21 | HBZ, ANNA GREY, AGENT ZED | Aloha Hey | BMG |
| 22 | HALSEY | 1121 | Capitol |
| 23 | DISCLOSURE X ZEDD | You've Got To Let Go If You... | Method Music |
| 24 | DJ SCENE | Clarity | --- |
| 25 | RODDY RICCH | Late At Night | Atlantic |
| 26 | FOR KING & COUNTRY | Relate | Curb Word |
| 27 | ASTRONOMERS | Bad Type | --- |
| 28 | JAX | To All The Boys I've Loved... | Atlantic |
| 29 | TWENTY ONE PILOTS | Shy Away | Fueled By Ramen/EMG |
| 30 | HARIZ | Border | Prosperous Enterprises |
| 31 | TIESTO & KAROL G | Don't Be Shy | Atlantic |
| 32 | POST MALONE | Candy Paint | Republic |
| 33 | AUDIEN | Wish It Was You f/Cate Downey | Armada Music |
| 34 | SEAN PAUL | Dynamite f/Sia | Island/Republic |
| 35 | LIL BABY | On Me | QC/Motown/Capitol |
| 36 | HRVY | 1 Day 2 Nights | BMG |
| 37 | DIANNA | Calm Down Karen | Slippery Eel |
| 38 | SURFACES & TAI VERDES | Sheesh! | 10K Projects/Capitol |
| 39 | WALE | On Chill f/Jeremih | MMG/Warner |
| 40 | SAM FISCHER | This City | RCA |
| 41 | KANYE WEST | Believe What I Say | G.O.O.D./Def Jam |
| 42 | JAX | 90s Kids | Atlantic |
| 43 | MUSTARD | Ballin' f/Roddy Ricch | 10 Summers/Interscope |
| 44 | STEPHANIE POETRI | Picture Myself | In.Thrill/88rising/12Tone |
| 45 | CAPELLA GREY | Gyalis | Capitol |
| 46 | DUA LIPA | Physical | Warner |
| 47 | BAD BUNNY | Callaita f/Tainy | Rimas |
| 48 | SHAWN MENDES | It'll Be Okay | Island/Republic |
| 49 | STATIC & BEN EL | Bella | Caroline |
| 50 | DIRTY HEADS | Vacation f/Train (2021) | Better Noise |

THE BEATLES

ON THE ED SULLIVAN SHOW



If this past Wednesday night you felt a rumble of cosmic energy in your soul, it was the memory of the life changing, world rattling cultural hard shift when John, Paul, George, and Ringo appeared for the first time on US television. For we geezers who were lucky enough to see it, we've often times tried to explain what happened but there are no words. It's was not unlike being reborn or falling in love. The broadcast on 2/9 1964 was more than a cultural reckoning. It was the birth of a lifestyle and mindset that made it very clear that it's ok to be yourself, have fun, be different and find your own path to change and happiness. Click here:



Faster Programming Intel From NuVoodoo.



The A.S.A.P Study



ACTIONABLE: A 10-minute interview is flexible but demands knowing the possible actions that might be taken.



SPEEDY: A 10-minute interview means the study gets into the field faster. A 300-person sample means that it will get out of the field faster. In the top 40 markets it's four weeks or less from approved questionnaire to presentation.



AFFORDABLE: An all-in cost of \$9500 minimizes risk and helps ensure a return on every budget dollar.



PERCEPTUAL STUDY: Quantitative research with scalable results from a well-designed, carefully-screened sample.

CHOOSE ONE FROM THREE STUDY DESIGNS:

Morning shows: What kind of show is in demand? Are there image leaders? What are the key audience benefits? Which images are contestable? Which features have gravity? Who are the hot personalities?

Comprehensive station health checkup: Are you optimally aligned among competitors? Strongest images? Most valuable images? Is your music dialed-in? Biggest threats? Easiest sources of new PI's?

Roadmap for music: The tightened interview allows testing of appeal for up to fifteen music styles, along with image questions.

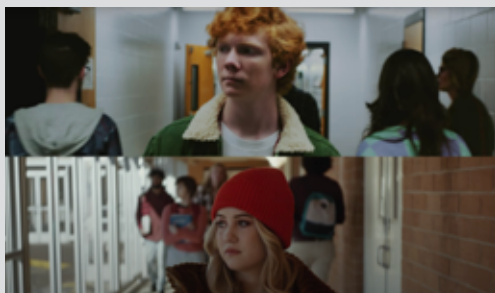


Check out these videos hand-picked by our staff!



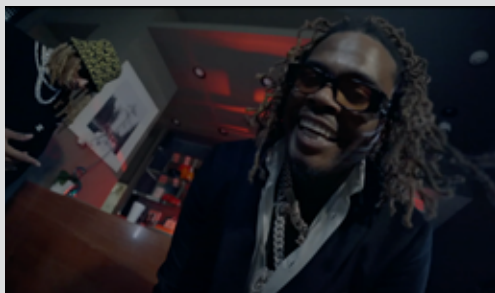
MACHINE GUN KELLY FT. WILLOW - "EMO GIRL"

Good Lord, there's a lot going on here. It's like a party on a screen. MGK is wailing away about his new emotional and angst filled-love interest in this in-your-face-field-trip-gone-awry! Whoooooaa. Wait. Isn't that Blink 182's producer savant Travis Barker hiding behind that turtleneck? And look at Willow who continues to emerge as Will's not so sweet Little Rock 'n Roller star-let. SiriusHits One is hammering this one. Dang, this one's so fun we're gonna watch it on a loop. Click here:



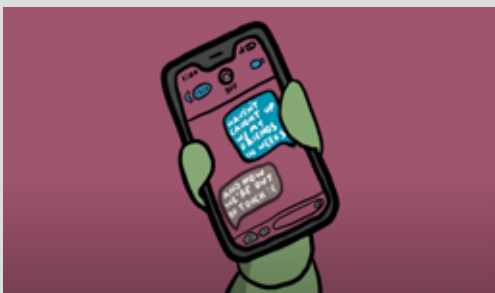
ED SHEEREN AND TAYLOR SWIFT - "THE JOKER AND THE QUEEN"

This song may prove to be a timeless masterpiece with its poetic lyric which is Ed/Taylor's 4th collaboration. The folkish production with a mesmerizing retro-strings under-dresses the song in the perfect wrapping to bring it to life. And the video itself is as cinematic as the composition, featuring "high-school" Taylor/Ed actors. Kind of like Glen Hansard's quiet monster "Falling Slowly", this song will be around forever. Click here:



GUNNA & FUTURE FT. YOUNG THUG - "PUSHIN P"

Okay, the one has it all. You have your Gunna, your Future and your Mr. Young Thug collaborating with all the trimmings: Bouncing' cars, bling-4-daze, booty deluxe XL, stashes of cash, strip em down clubs, popping more than the champagne and a track called "Pushin' P" which is pinging the MMI sonar like cra-cra. Push this button and click here:



EM BEIHOLD - "NUMB LITTLE BUG"

Em caught our ear last year with "Groundhog Day" which amassed about 30 million on the WWW-Social-Digi-Ticky-Toc thing. Now the LA home grown singer/songwriter sneaks back with "Numb Little Bug" and we kinda dig the cool, theatrical, youthful groove of this track. And this one's getting some of that hard fought radio spin-age to boot which tells us that this perky bug of a hit won't get squashed by the big-foots. Click here:



COI LERAY - "ANXIETY"

FAQs: Yes, beautiful Coi is the daughter of media mogul Benzino and, is she "a thing" with the aforementioned Gunna? Maybe. In this stylish and cool clip of "Anxiety", Jersey girl Coi collaborates with a skin-tight dancing demon of stress and pain. As pretty as it is, the track captures the menace of depression and how we deal with the dark side. So, this is kind of a feeling good about feeling bad sorta thing. Click here:



CHARTS/POWERS:

1 AIRPLAY is calculated by Trailing 14 Days of radio airplay on the Key Influencer radio stations – Top 157 radio stations by Average Quarter Hour. Charts are weighted using currently assigned points in Mediabase...100% point value for Morning Drive, 90% for Afternoon Drive, 80% for Mid-days, 70% for nights, 50% for Overnights.

2 AIRSCORE: THE AIRPLAY INTEL 3.0 RETENTION SCORE predicts listener tune-in/tune-out on song play by contemplating the trend over time relationship between local and national airplay, local/regional callout, and audio and video streaming.

3 NATIONAL CALLOUT contemplates more than 1,000 respondents weekly in four regions geographically equivalent over the trailing 14 days of calls.

4 STREAMING, AUDIO contemplates trailing 14 days of all streaming. Songs with insufficient data are designated with an "x". These songs do not affect the Total Performance Score in any way.

5 STREAMING, VIDEO contemplates trailing 14 days of all streaming. Songs with insufficient data are designated with an "x". These songs do not affect the Total Performance Score in any way.

6 SALES is based on 14 days trailing results. Songs with insufficient data are designated as PENDING. Pending songs do not affect Total Performance Score in any way.

HOT ZONE / DEVELOPING

All five components listed above are contemplated. Songs moving up and increasing significantly in TWO or more categories are designated in the Hot Zone. Other new releases are designated as Developing.

RECURRENTS

Recurrents are a simple calculation of songs that have trended downward and no longer qualify for Current status. Trailing 14 days are contemplated, along with 6 weeks of Retention Data, and are computed on a 50/50 level of importance.

ACTION

Songs that are testing either in Callout or in Retention significantly higher than current Airplay rank. These songs are considered UNDEREXPOSED and deserving generally of greater airplay.

STREAMING AUDIO, VIDEO AND SALES

Streaming Audio and Video, and Sales, are based on trailing 14 days data. All major streaming services are used wherever possible, along with sales.

NOTE: Hot AC Callout information is provided as stand-alone information. This data does not factor into the main chart rankings in any way.

CALL US at
818-699-6400
or EMAIL
contact@mmi2020.com

MONDAY MORNING INTEL

© AIRPLAY INTELLIGENCE, LLC, 2021,
No part of the materials available through the
MONDAY MORNING INTEL presentation
may be copied, photocopied, reproduced,
translated or reduced to any electronic
medium or machine-readable form, in
whole or in part, without prior written
consent of AIRPLAY INTELLIGENCE, LLC.
Any other reproduction in any form without
permission of AIRPLAY INTELLIGENCE, LLC
is prohibited. All materials contained on this
presentation are protected by United States
copyright law and may not be reproduced,
distributed, transmitted, displayed, published or
broadcast without the prior written permission of
AIRPLAY INTELLIGENCE, LLC. 2021.

PRIVACY POLICY
[Click Here](#)



THANK YOU
from the entire staff:

PUBLISHERS:

ZEN CZAR

Rich Meyer

CHIEF WRANGLER

Steve Lehman

**MARKETING, PROMOTION
& Magic Fueled by Studio2Bee**
MASTERS OF THE SUN

Skip Bishop

Butch Waugh

Kylee Laynee Higgins

RESEARCH TEAM
**PEOPLE WHO ACTUALLY
DO THE WORK**

Richard R. Deitemeyer

Kate Collins

Brittany Whitney

Brenda Manney

Todd Morris

GRAPHIC DESIGN
EGO Design

PYTHON POWER RANGER
Trent Trento

OPERATIONS
Kylee Laynee Higgins

PAW POWER
NOT IN MY BOWL

Heidi Dog

Monkey Dog

Cooper