

MONDAY
MORNING
INTEL



*Sarah
Reeves*

CURB
RECORDS

TOP 40 EDITION

JULY 10, 2023

*Sarah
Reeves*

GET BACK YOUR FIGHT

IMPACTING HAC 7/17

CURB
RECORDS

MONDAY
MORNING
INTEL

JULY 10, 2023

***TABLE OF
CONTENTS***

- 4 #1 SONGS THIS WEEK***
- 7 POWERS***
- 8 ACTION/RECURRENTS***
- 10 TOP 40 CALLOUT***
- 11 MMI WEEK AT A GLANCE***
- 13 HOTZONE/DEVELOPING***
- 14 HOTAC CALLOUT***
- 15 CALLOUT DIAGNOSIS***
- 16 VIDEO STREAMING***
- 17 INTELESCOPE***
- 18 INTELEVISION***
- 19 METHODOLOGY***
- 20 THE BACK PAGE***

**MONDAY
MORNING
INTEL**

#1 SONGS THIS WEEK

BY MMI COMPOSITE CATEGORIES

7.10.23

COMPOSITE

MORGAN WALLEN "LAST NIGHT"

AIRPLAY

TAYLOR SWIFT "KARMA"

AIRSCORE

REMA & SELENA GOMEZ "CALM DOWN"

CALLOUT

METRO BOOMIN F/THE WEEKND, 21 SAV "CREEPIN"

AUDIO

MORGAN WALLEN "LAST NIGHT"

VIDEO

FIFTY FIFTY "CUPID"

SALES

LUKE COMBS "FAST CAR"

MondayMorningIntel.com



CLICK HERE to E-MAIL Monday Morning Intel with your thoughts, suggestions, or ideas.

**MONDAY
MORNING
INTEL**

AIRPLAY INTEL

3.0

HUNDREDS OF
IN-DEPTH STATION PLAYLISTS
WITH SUGGESTED PLAY ANALYSES

800 WEEKLY
IN-DEPTH WEEKLY CALLOUT RESEARCH
RESPONDENTS FROM DOZENS OF KEY MARKETS

AIRPLAY, STREAMING, AIRSCORE, & MORE

ARM YOUR RADIO STATION
WITH THE MOST POWERFUL
RESEARCH IN THE INDUSTRY

CALL **CHERYL BROZ 615-293-9867** FOR A FULL DEMO



**YES,
IT
GETS
IT**

We love Airplay Intel. It is a great tool to help us find what songs **ARE GOING TO HIT NEXT** and also shows us that the proven hits still need to be spun in a high rotation. **IT'S SUCH A NECESSARY TOOL** when it comes to our **5 stations** and making sure we are focused and **PLAYING THE STRONGEST SONGS** for our stations.

CAT THOMAS

OM/PD/DPD
Beasley Media Group/Las Vegas

| TWRK AIRPLAY | TWRK AIRScore | TWRK CALLOUT | TWRK AUDIO | TWRK VIDEO | TWRK SALES | TW COMP RANK | ARTIST | TITLE | LABEL |
|--------------|---------------|--------------|------------|------------|------------|--------------|---------------------------------|--------------------------------|---------------------------|
| 5 | 4 | 4 | 1 | 9 | 2 | 1 | MORGAN WALLEN | Last Night | Big Loud/Mercury/Republic |
| 2 | 1 | 7 | 9 | 3 | 5 | 2 | REMA & SELENA GOMEZ | Calm Down | Mavin/Virgin/Interscope |
| 4 | 3 | 3 | 7 | 7 | 4 | 3 | MILEY CYRUS | Flowers | Columbia |
| 12 | 8 | 15 | 4 | 4 | 12 | 4 | TOOSII | Favorite Song | SCMG/Capitol |
| 3 | 2 | 2 | 18 | 11 | 20 | 5 | MIGUEL | Sure Thing | By Storm/RCA |
| 1 | 5 | 12 | 12 | 20 | 9 | 6 | TAYLOR SWIFT | Karma | Republic |
| 20 | 9 | 9 | 2 | 21 | 1 | 7 | LUKE COMBS | Fast Car | River House/Columbia Nash |
| 10 | 6 | 6 | 5 | 10 | 26 | 8 | SZA | Kill Bill | Top Dawg/RCA |
| 15 | 12 | 10 | 6 | 16 | 7 | 9 | TAYLOR SWIFT | Cruel Summer | Republic |
| 11 | 10 | 26 | 11 | 1 | 17 | 10 | FIFTY FIFTY | Cupid | Warner |
| 23 | 16 | 25 | 3 | 8 | 6 | 11 | LIL DURK | All My Life f/J. Cole | Alamo |
| 7 | 7 | 1 | 20 | 26 | 37 | 12 | METRO BOOMIN | Creepin' f/The Weeknd, 21 Sav. | Boominati/Epic-Republic |
| 14 | 13 | 23 | 17 | 18 | 25 | 13 | SZA | Snooze | Top Dawg/RCA |
| 9 | 15 | 31 | 25 | 22 | 8 | 14 | DUA LIPA | Dance The Night | Atlantic/Warner |
| 31 | 21 | 11 | 21 | 5 | 19 | 15 | DAVID KUSHNER | Daylight | Virgin |
| 26 | 23 | 16 | 16 | 6 | 34 | 16 | PINKPANTHERESS & ICE SPICE | Boy's A Liar | 300 Ent./Capitol-3EE |
| 8 | 14 | 27 | 24 | 34 | 15 | 17 | POST MALONE | Chemical | Mercury/Republic |
| 6 | 11 | 20 | 32 | 39 | 13 | 18 | ED SHEERAN | Eyes Closed | Atlantic |
| 42 | 27 | 14 | 15 | 2 | 28 | 19 | KALI | Area Codes | Atlantic |
| 35 | 22 | 13 | 37 | 12 | 21 | 20 | ICANDY | Keep Dat | RECORDS/Columbia |
| 40 | 26 | 5 | 31 | 13 | 32 | 21 | DOECHII & KODAK BLACK | What It Is (Block Boy) | TDE/Capitol |
| 16 | 17 | 19 | 40 | 38 | 27 | 22 | MILEY CYRUS | Jaded | Columbia |
| 19 | 24 | 30 | 29 | 44 | 16 | 23 | POST MALONE | Mourning | Mercury/Republic |
| 13 | 18 | 35 | 38 | 36 | 22 | 24 | JONAS BROTHERS | Waffle House | Republic |
| 32 | 37 | 34 | 27 | 30 | 3 | 25 | KODAK BLACK & NLE CHOPPA | Angel Pt. 1 f/Jimin,JVKE,Muni | Artist Partner Group |
| 18 | 19 | 22 | 35 | 47 | 23 | 26 | D. GUETTA/ANNE-MARIE/C. LERAY | Baby Don't Hurt Me | Parlophone UK/Warner |
| 46 | x | x | 13 | 29 | 14 | 27 | LIL DURK | Stand By Me f/Morgan Wallen | Republic-Alamo |
| 17 | 20 | 33 | 36 | 35 | 33 | 28 | NF | HAPPY | NF Real Music/Virgin |
| 38 | 46 | 43 | 10 | 15 | 11 | 29 | DOJA CAT | Attention | Kemosabe/RCA |
| 21 | 25 | 28 | 45 | 43 | 18 | 30 | P!NK | TRUSTFALL | RCA |
| 22 | 35 | 36 | x | x | x | 31 | OLIVIA RODRIGO | Vampire | Geffen/Interscope |
| 50 | x | x | 8 | 17 | 36 | 32 | BAD BUNNY | Where She Goes | Rimas/The Orchard |
| 29 | 28 | 29 | 26 | 40 | 41 | 33 | THE WEEKND | Popular f/Playboi C. & Madonna | XO/Republic |
| 36 | 30 | 18 | 43 | 33 | 35 | 34 | LEWIS CAPALDI | Wish You The Best | Capitol |
| 44 | 45 | x | 23 | 14 | 31 | 35 | ICE SPICE & NICKI MINAJ | Princess Diana | 10K/Republic-Capitol |
| 27 | 31 | 37 | 33 | 32 | 39 | 36 | BAKAR | Hell N Back | Black Butter/Epic |
| 47 | 40 | x | 14 | 24 | 30 | 37 | DRAKE | Search & Rescue | OVO/Republic |
| 34 | 43 | 21 | x | x | x | 38 | NICKI MINAJ & ICE SPICE | Barbie World w/Aqua | Atlantic-Republic-Capitol |
| 28 | 34 | 24 | 48 | 46 | 24 | 39 | PITBULL & LIL JON | Jumpin | Mr. 305 |
| 39 | 42 | 38 | 19 | 27 | 42 | 40 | METRO BOOMIN/NAV/A BOOGIE... | Calling f/Swae Lee | Republic |
| 41 | 33 | 8 | 46 | 31 | 46 | 41 | BENSON BOONE | In The Stars | Warner |
| 24 | 29 | 40 | 44 | 25 | 47 | 42 | MELANIE MARTINEZ | Void | Atlantic |
| 49 | x | x | 30 | 19 | 40 | 43 | LIBIANCA | People | RCA |
| 45 | 44 | x | 39 | 37 | 10 | 44 | KYLIE MINOGUE | Padam Padam | BMG |
| 43 | 41 | 17 | 34 | 23 | 48 | 45 | D4VD | Here With Me | Darkroom/Interscope |
| 25 | 32 | 32 | 41 | 45 | 45 | 46 | HARRY STYLES | Satellite | Columbia |
| 48 | 47 | x | 22 | 28 | 29 | 47 | METRO BOOMIN/A\$AP ROCKY/ROISEE | Am I Dreaming | Republic |
| 33 | 36 | 42 | 28 | 41 | 44 | 48 | DOMINIC FIKE | Mona Lisa (Spider-Man: Across | Columbia |
| 37 | 38 | 39 | 42 | 48 | 38 | 49 | CALVIN HARRIS & ELLIE GOULDING | Miracle | Columbia |
| 30 | 39 | 41 | 47 | 42 | 43 | 50 | JONAS BROTHERS | Summer Baby | Republic |

| TW RANK | TWRK AIRPLAY | TWMMI COMPOSITE | ACTION FACTOR | ARTIST | TITLE | LABEL/IMPRINT |
|---------|--------------|-----------------|---------------|----------------------------|-----------------------------|---------------------------|
| 1 | 42 | 19 | 23 | KALI | Area Codes | Atlantic |
| 2 | 46 | 27 | 19 | LIL DURK | Stand By Me f/Morgan Wallen | Republic-Alamo |
| 3 | 40 | 21 | 19 | DOECHII & KODAK BLACK | What It Is (Block Boy) | TDE/Capitol |
| 4 | 50 | 32 | 18 | BAD BUNNY | Where She Goes | Rimas/The Orchard |
| 5 | 31 | 15 | 16 | DAVID KUSHNER | Daylight | Virgin |
| 6 | 35 | 20 | 15 | ICANDY | Keep Dat | RECORDS/Columbia |
| 7 | 20 | 7 | 13 | LUKE COMBS | Fast Car | River House/Columbia Nash |
| 8 | 23 | 11 | 12 | LIL DURK | All My Life f/J. Cole | Alamo |
| 9 | 26 | 16 | 10 | PINKPANTHERESS & ICE SPICE | Boy's A Liar | 300 Ent./Capitol-3EE |
| 10 | 47 | 37 | 10 | DRAKE | Search & Rescue | OVO/Republic |

| RANK TW | ARTIST | TITLE | LABEL/IMPRINT |
|---------|-------------------------------|------------------------------|-------------------------|
| 1 | THE WEEKND | Die For You | XO/Republic |
| 2 | HARRY STYLES | As It Was | Columbia |
| 3 | DAVID GUETTA & BEBE REXHA | I'm Good (Blue) | Parlophone UK/Warner |
| 4 | TAYLOR SWIFT | Anti-Hero | Republic |
| 5 | POST MALONE | I Like You .. f/Doja Cat | Mercury/RCA-Republic |
| 6 | THE KID LAROI & JUSTIN BIEBER | Stay | Columbia |
| 7 | GLASS ANIMALS | Heat Waves | Republic |
| 8 | SAM SMITH & KIM PETRAS | Unholy | Capitol |
| 9 | NICKY YOU'RE | Sunroof f/Dazy | Columbia |
| 10 | COI LERAY | Players | Uptown/Republic |
| 11 | LIZZO | About Damn Time | Nice Life/Atlantic |
| 12 | JUSTIN BIEBER | Ghost | Def Jam |
| 13 | HARRY STYLES | Late Night Talking | Columbia |
| 14 | STEPHEN SANCHEZ | Until I Found You | Mercury/Republic |
| 15 | STEVE LACY | Bad Habit | L-M/RCA |
| 16 | ED SHEERAN | Bad Habits | Atlantic |
| 17 | RAYE | Escapism f/070 Shake | HR/The Orchard-Def Jam |
| 18 | DOJA CAT | Need To Know | Kemosabe/RCA |
| 19 | DOJA CAT | Vegas | Kemosabe/RCA |
| 20 | LATTO | Big Energy | Streamcut/RCA |
| 21 | LIL NAS X | Thats What I Want | Columbia |
| 22 | LIL NAS X & JACK HARLOW | INDUSTRY BABY | Columbia |
| 23 | TAYLOR SWIFT | Lavender Haze | Republic |
| 24 | JACK HARLOW | First Class | Generation Now/Atlantic |
| 25 | ONEREPUBLIC | I Ain't Worried | Mosley/Interscope |
| 26 | CHRIS BROWN | Under The Influence | Chris Brown Ent./RCA |
| 27 | NICKI MINAJ | Super Freaky Girl | Republic |
| 28 | ED SHEERAN | Shivers | Atlantic |
| 29 | SIA | Unstoppable | RCA |
| 30 | IMAGINE DRAGONS | Enemy From League Of Legends | KidinaKorner/Interscope |

TRUE INTEGRATION



RCS
Sound Software

GSelector[®]

Music Scheduling

Zetta[®]

Automation

Aquira[®]

Traffic

Revma[™]

Streaming

RCSCloud

Peace-of-Mind

RCS2GO[®]

Mobile

rcsworks.com

© Copyright 2022 RCS. All Rights Reserved. RCS Sound Software and their marks and logos are registered trademarks of RCS.

Introducing OMT Lite

THE ONLINE MUSIC TEST

When a full-sized OMT is a strain on time or budget, get answers from 100 screened respondents on 400 titles for under \$10,000.



ACTIONABLE



SPEEDY



AFFORDABLE



MUSIC RESEARCH

nuvoodoo 

nuvoodoo.com | 888.986.6366 | tellmemore@nuvoodoo.com

| RANK | ARTIST | TITLE | NEAST | MIDWEST | SOUTH | WEST |
|------|--|------------------------|-------|---------|-------|------|
| 1 | METRO BOOMIN FEAT. THE WEEKND, 21 SAVAGE | Creepin' | 1 | 1 | 1 | 1 |
| 2 | MIGUEL | Sure Thing | 5 | 2 | 2 | 2 |
| 3 | CYRUS, MILEY | Flowers | 7 | 4 | 7 | 4 |
| 4 | WALLEN, MORGAN | Last Night | 16 | 3 | 3 | 9 |
| 5 | DOECHII & KODAK BLACK | What It Is (Block Boy) | 13 | 6 | 4 | 5 |
| 6 | SZA | Kill Bill | 6 | 8 | 6 | 7 |
| 7 | REMA & SELENA GOMEZ | Calm Down | 4 | 13 | 17 | 3 |
| 8 | BOONE, BENSON | In The Stars | 8 | 12 | 9 | 6 |
| 9 | COMBS, LUKE | Fast Car | 12 | 5 | 5 | 19 |
| 10 | SWIFT, TAYLOR | Cruel Summer | 2 | 11 | 14 | 13 |
| 11 | KUSHNER, DAVID | Daylight | 14 | 10 | 12 | 8 |
| 12 | SWIFT, TAYLOR | Karma | 3 | 14 | 16 | 10 |
| 13 | ICANDY | Keep Dat | 18 | 9 | 10 | 16 |
| 14 | KALI | Area Codes | 10 | 15 | 11 | 14 |
| 15 | TOOSII | Favorite Song | 21 | 7 | 13 | 18 |
| 16 | PINKPANTHERESS | Boy's A Liar | 9 | 20 | 15 | 12 |
| 17 | D4VD | Here With Me | 15 | 22 | 8 | 23 |
| 18 | CAPALDI, LEWIS | Wish You The Best | 19 | 17 | 18 | 24 |
| 19 | CYRUS, MILEY | Jaded | 17 | 18 | 21 | 21 |
| 20 | SHEERAN, ED | Eyes Closed | 22 | 16 | 23 | 15 |
| 21 | MINAJ, NICKI & ICE SPICE FEAT. AQUA | Barbie World | 11 | 24 | 20 | 20 |
| 22 | GUETTA, DAVID, ANNE-MARIE, COI LERAY | Baby Don't Hurt Me | 20 | 21 | 22 | 17 |
| 23 | SZA | Snooze | 25 | 28 | 19 | 11 |
| 24 | PITBULL FEAT. LIL' JON | Jumpin | 24 | 19 | 24 | 22 |
| 25 | LIL DURK FEAT. J. COLE | All My Life | 27 | 23 | 25 | 26 |
| 26 | FIFTY FIFTY | Cupid | 23 | 27 | 28 | 25 |
| 27 | POST MALONE | Chemical | 29 | 26 | 26 | 27 |
| 28 | PINK | Trustfall | 26 | 25 | 27 | 34 |
| 29 | THE WEEKND FEAT. PLAYBOI CARTI & MADONNA | Popular | 31 | 33 | 29 | 28 |
| 30 | POST MALONE | Mourning | 28 | 30 | 30 | 35 |

This is an abbreviated report.
For greatly expanded research
contact:

Cheryl Broz
615.293.9867
cheryl@airplayintel.com

AIRPLAY
INTEL
3.0



MMI **WEEK AT A** **GLANCE**

JOHN SHOMBY

Partner, Radio's Fresh Eyes, LLC | EVP/GM Studio2Bee Entertainment
Sr. Chart/Data Analyst MMI Publications

This week not only are there two country crossover songs in the top 10, one of them has reached the top spot. Morgan Wallen's "Last Night" is now a multi-format number one on the MMI Power chart going from 3 to 1. Top 5 in sales, callout and airplay and number one in audio streaming, the panel is 100% on board as a heavy and, apparently, for a while. Luke Combs' "Fast Car" stays at number 7. Number one sales, 2nd in audio streaming and ranked 9th in callout, the panel remains cautious about putting this in heavy with the airplay rank still at 20. Might want to re-consider that. Top 5 25-34 in callout. Just sayin'.

Taylor Swift has the distinction this week of placing two in the top 10. Her re-release of "Cruel Summer" rises two spots to 9th overall this week. After only three weeks on the chart, the song is already top 10 in sales, audio streams and callout and stations are getting behind it quickly as it moves from 21st to 15th in airplay. Her current top 5 hit, "Karma", goes 8 to 6 overall and is the most played song this week by the panel. The format needs more tunes like these.

A couple of songs, starting to make their move, are getting some panel attention. SZA's follow-up to "Kill Bill", "Snooze" is wide awake and enters the top 15 moving 16 to 14 overall. Top 20 in streaming and 14th in airplay show that her track record is getting this on the radio as much as the song. David Kushner's haunting "Daylight", though not a top 40 pop sound, makes it into the top 15 at number 15 up two spots. Driven by a strong video (5th) and callout (11th), the airplay rank of 30 indicates stations are proceeding cautiously. It definitely does not speak "summer" when you hear it.

Rounding out the top 5 behind Morgan Wallen is basically the same group as last week. Miguel's "Sure Thing" is still solid at 5th behind a number 2 rank in callout and 3rd in airplay. Remaining at 4th after 14 weeks on the chart, Toosi's "Favorite Song" looks good with top 5 numbers in streaming. Airplay is stalled at 12th as the panel sees this as a decent medium right now. Miley Cyrus' "Flowers" drops one from 2 to 3. She's top 5 sales, callout, and airplay and top 10 in streaming. The high burn score in callout (18.2) is something to consider as far rotation is concerned. After one week at number one, Rema and Selena Gomez' "Calm Down" slips to 2nd but remains hot with top 5 sales and video streams along with 2nd in airplay. A few more weeks left in this one.





MONDAY
MORNING
INTEL

DELIVERS
DECISION-MAKING
MUSCLE

AIRPLAY
INTEL

3.0

COMPLETE, LOCALIZED & ANALYZED
RESEARCH
WITH THE CHART THAT MATTERS

| | ARTIST | TITLE | LABEL/IMPRINT |
|----------------|------------------------------|-------------------------------|---------------------------|
| <i>HOTZONE</i> | SZA | Snooze | Top Dawg/RCA |
| <i>HOTZONE</i> | TAYLOR SWIFT | Cruel Summer | Republic |
| <i>HOTZONE</i> | OLIVIA RODRIGO | Vampire | Geffen/Interscope |
| <i>HOTZONE</i> | ONEREPUBLIC | Runaway | Mosley/Interscope |
| <i>HOTZONE</i> | DAVID KUSHNER | Daylight | Virgin |
| <i>HOTZONE</i> | DOMINIC FIKE | Mona Lisa (Spider-Man: Across | Columbia |
| <i>HOTZONE</i> | NICKI MINAJ & ICE SPICE | Barbie World w/Aqua | Atlantic-Republic-Capitol |
| <i>HOTZONE</i> | DOJA CAT | Attention | |
| <i>HOTZONE</i> | METRO BOOMIN/NAV/A BOOGIE... | Calling f/Swae Lee | |
| <i>HOTZONE</i> | SMITH | Lemon | |

| | ARTIST | TITLE | LABEL/IMPRINT |
|-------------------|--------------------------|--------------------------------|---------------------------|
| <i>DEVELOPING</i> | FIFTY FIFTY | Cupid | Warner |
| <i>DEVELOPING</i> | TOOSII | Favorite Song | SCMG/Capitol |
| <i>DEVELOPING</i> | JONAS BROTHERS | Waffle House | Republic |
| <i>DEVELOPING</i> | MILEY CYRUS | Jaded | Columbia |
| <i>DEVELOPING</i> | POST MALONE | Mourning | Mercury/Republic |
| <i>DEVELOPING</i> | LUKE COMBS | Fast Car | River House/Columbia Nash |
| <i>DEVELOPING</i> | LIL DURK | All My Life f/J. Cole | Alamo |
| <i>DEVELOPING</i> | MELANIE MARTINEZ | Void | Atlantic |
| <i>DEVELOPING</i> | BAKAR | Hell N Back | Black Butter/Epic |
| <i>DEVELOPING</i> | PITBULL & LIL JON | Jumpin | Mr. 305 |
| <i>DEVELOPING</i> | THE WEEKND | Popular f/Playboi C. & Madonna | XO/Republic |
| <i>DEVELOPING</i> | GRACIE ABRAMS | I Know It Won't Work | Interscope |
| <i>DEVELOPING</i> | JONAS BROTHERS | Summer Baby | Republic |
| <i>DEVELOPING</i> | KODAK BLACK & NLE CHOPPA | Angel Pt. 1 f/Jimin,JVKE,Muni | Artist Partner Group |
| <i>DEVELOPING</i> | ICANDY | Keep Dat | RECORDS/Columbia |
| <i>DEVELOPING</i> | BENSON BOONE | In The Stars | Warner |

| RANK | ARTIST | TITLE | N/EAST | MIDWEST | SOUTH | WEST |
|------|--|-----------------------------|--------|---------|-------|------|
| 1 | GLASS ANIMALS | HEAT WAVES | 5 | 4 | 1 | 4 |
| 2 | METRO BOOMIN FEAT. THE WEEKND, 21 SAVAGE | CREEPIN' | 1 | 2 | 3 | 3 |
| 3 | THE KID LAROI & JUSTIN BIEBER | STAY | 3 | 3 | 6 | 2 |
| 4 | SIA | UNSTOPPABLE | 4 | 8 | 4 | 7 |
| 5 | CYRUS, MILEY | FLOWERS | 9 | 5 | 7 | 6 |
| 6 | SHEERAN, ED | BAD HABITS | 7 | 10 | 5 | 8 |
| 7 | YOU'RE, NICKY | SUNROOF | 11 | 11 | 2 | 9 |
| 8 | BIEBER, JUSTIN | GHOST | 2 | 9 | 11 | 11 |
| 9 | GUETTA, DAVID & BEBE REXHA | I'M GOOD (BLUE) | 6 | 13 | 10 | 10 |
| 10 | MIGUEL | SURE THING | 8 | 7 | 16 | 12 |
| 11 | Lipa, Dua | Levitating | 13 | 17 | 15 | 5 |
| 12 | Wallen, Morgan | Last Night | 16 | 1 | 14 | 13 |
| 13 | Smith, Sam Feat. Kim Petras | Unholy | 10 | 16 | 17 | 15 |
| 14 | The Weeknd | Die For You | 17 | 12 | 12 | 16 |
| 15 | Combs, Luke | Fast Car | 25 | 6 | 9 | 21 |
| 16 | Boone, Benson | In The Stars | 15 | 18 | 8 | 17 |
| 17 | Rema & Selena Gomez | Calm Down | 12 | 22 | 13 | 14 |
| 18 | Capaldi, Lewis | Forget Me | 18 | 15 | 18 | 18 |
| 19 | Post Malone Feat. Doja Cat | I Like You (A Happier Song) | 14 | 29 | 30 | 1 |
| 20 | Styles, Harry | As It Was | 23 | 14 | 19 | 20 |
| 21 | Swift, Taylor | Anti-Hero | 22 | 21 | 21 | 19 |
| 22 | Sheeran, Ed | Eyes Closed | 21 | 23 | 20 | 22 |
| 23 | Guetta, David Feat. Anne-Marie & Coi Leray | Baby Don't Hurt Me | 19 | 25 | 22 | 25 |
| 24 | Lizzo | About Damn Time | 20 | 24 | 25 | 23 |
| 25 | Swift, Taylor | Karma | 30 | 19 | 23 | 26 |
| 26 | Lewis, Dean | How Do I Say Goodbye | 27 | 20 | 27 | 27 |
| 27 | Swift, Taylor | Cruel Summer | 29 | 26 | 26 | 24 |
| 28 | Cyrus, Miley | Jaded | 26 | 27 | 24 | 28 |
| 29 | Capaldi, Lewis | Wish You The Best | 24 | 30 | 28 | 29 |
| 30 | Pink | Trustfall | 28 | 28 | 33 | 31 |

This is an abbreviated report.
For greatly expanded research
contact:

Cheryl Broz
615.293.9867
cheryl@airplayintel.com

AIRPLAY
INTEL

3.0



THE CALLOUT DIAGNOSIS HOTAC

MIKE McVAY

President
McVay Media Consulting

Hot AC has always been the format that follows CHR. If we take a peek into the CHR format, looking for titles that will lead at Hot AC, there's some strong testing titles that have great appeal. "Creepin" by Metro Boomin, "Sure Thing" Miguel, "Flowers" by Miley Cyrus and Morgan Wallen with "Last Night" come close to match what we're seeing at Hot AC. Metro Boomin and Miley are among the high testers for HAC.

The aforementioned Miguel broke into the Top-10 testing titles and Morgan Wallen is now the 12th best researching song on the Hot AC chart. Low burn. Growing positive scores that are tracking nicely. This title is one that can work in a Power Category now. That may require moving some high testing titles into the Recurrent category, but that's probably something that should happen anyway. Summer, between the spring and fall rating sweeps, is always a great time to introduce new music that can carry you through the fall sweep. Build familiarity now.

Glass Animals with "Heatwaves" tops the best testing list. Appropriate for what's happening weatherwise in the Southwest. Metro Boomin' comes through with "Creepin'." "Unstoppable" by Sia, which is inarguably her best testing and longest running hit, ranks #4 in Total Positive and has a Tired Of score of 15.0%. Talk about a properly named song. Sia is unstoppable.

Ed Sheeran "Bad Habits" is the #6 best testing song this week. The song has a Total Positive of 64.3%. It is testing decidedly stronger with Females 33-39 showing a Total Positive of 68.6% while the Female 25-32 is showing a Total Positive of 60.1%. What I really like about this song is its' low Burn score coming in at only 11.5% Tired Of. That signals to me that this will be a long lasting song occupying a space in the Power category.

Reviewing this week's research, with freshening your list in mind, pay attention to Miley Cyrus' song "Jaded" and Taylor Swifts "Cruel Summer." Two of my favorite female performers and two of my most favorite songs. Harry Styles "Satellite" is another tune showing a positive reaction from the test group. Somewhat further down the test list is "I Like You (A Happier Song)" by Post Malone Featuring Doja Cat. It may be new to the test list, but it's showing a 56.7 Total Positive score with Females 25-32 and has a 58.9 with Females 33-39. That put this song in a *One to Watch* category.

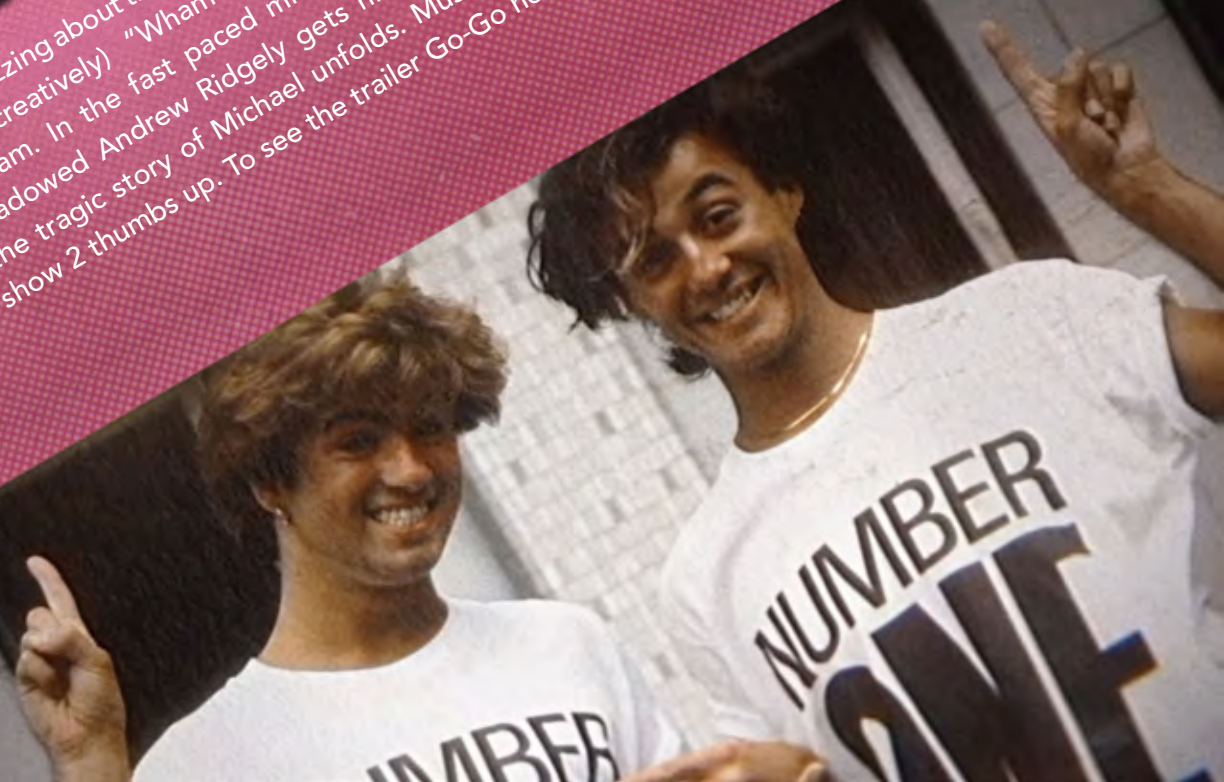
| AV RANK | ARTIST | TITLE | LABEL/IMPRINT | LISTENLINKS |
|---------|---------------------------------|--------------------------------|---------------------------|------------------------------|
| 1 | FIFTY FIFTY | Cupid | Warner | PLAY VIDEO ▶ |
| 2 | KALI | Area Codes | Atlantic | PLAY VIDEO ▶ |
| 3 | REMA & SELENA GOMEZ | Calm Down | Mavin/Virgin/Interscope | PLAY VIDEO ▶ |
| 4 | TOOSII | Favorite Song | SCMG/Capitol | PLAY VIDEO ▶ |
| 5 | DAVID KUSHNER | Daylight | Virgin | PLAY VIDEO ▶ |
| 6 | PINKPANTHERESS & ICE SPICE | Boy's A Liar | 300 Ent./Capitol-3EE | PLAY VIDEO ▶ |
| 7 | MILEY CYRUS | Flowers | Columbia | PLAY VIDEO ▶ |
| 8 | LIL DURK | All My Life f/J. Cole | Alamo | PLAY VIDEO ▶ |
| 9 | MORGAN WALLEN | Last Night | Big Loud/Mercury/Republic | PLAY VIDEO ▶ |
| 10 | SZA | Kill Bill | Top Dawg/RCA | PLAY VIDEO ▶ |
| 11 | MIGUEL | Sure Thing | By Storm/RCA | PLAY VIDEO ▶ |
| 12 | ICANDY | Keep Dat | RECORDS/Columbia | PLAY VIDEO ▶ |
| 13 | DOECHII & KODAK BLACK | What It Is (Block Boy) | TDE/Capitol | PLAY VIDEO ▶ |
| 14 | ICE SPICE & NICKI MINAJ | Princess Diana | 10K/Republic-Capitol | PLAY VIDEO ▶ |
| 15 | DOJA CAT | Attention | Kemosabe/RCA | PLAY VIDEO ▶ |
| 16 | TAYLOR SWIFT | Cruel Summer | Republic | PLAY VIDEO ▶ |
| 17 | BAD BUNNY | Where She Goes | Rimas/The Orchard | PLAY VIDEO ▶ |
| 18 | SZA | Snooze | Top Dawg/RCA | PLAY VIDEO ▶ |
| 19 | LIBIANCA | People | RCA | PLAY VIDEO ▶ |
| 20 | TAYLOR SWIFT | Karma | Republic | PLAY VIDEO ▶ |
| 21 | LUKE COMBS | Fast Car | River House/Columbia Nash | PLAY VIDEO ▶ |
| 22 | DUA LIPA | Dance The Night | Atlantic/Warner | PLAY VIDEO ▶ |
| 23 | D4VD | Here With Me | Darkroom/Interscope | PLAY VIDEO ▶ |
| 24 | DRAKE | Search & Rescue | OVO/Republic | PLAY VIDEO ▶ |
| 25 | MELANIE MARTINEZ | Void | Atlantic | PLAY VIDEO ▶ |
| 26 | METRO BOOMIN | Creepin' f/The Weeknd, 21 Sav. | Boominati/Epic-Republic | PLAY VIDEO ▶ |
| 27 | METRO BOOMIN/NAV/A BOOGIE... | Calling f/Swae Lee | Republic | PLAY VIDEO ▶ |
| 28 | METRO BOOMIN/A\$AP ROCKY/ROISEE | Am I Dreaming | Republic | PLAY VIDEO ▶ |
| 29 | LIL DURK | Stand By Me f/Morgan Wallen | Republic-Alamo | PLAY VIDEO ▶ |
| 30 | KODAK BLACK & NLE CHOPPA | Angel Pt. 1 f/Jimin,JVKE,Muni | Artist Partner Group | PLAY VIDEO ▶ |
| 31 | BENSON BOONE | In The Stars | Warner | PLAY VIDEO ▶ |
| 32 | BAKAR | Hell N Back | Black Butter/Epic | PLAY VIDEO ▶ |
| 33 | LEWIS CAPALDI | Wish You The Best | Capitol | PLAY VIDEO ▶ |
| 34 | POST MALONE | Chemical | Mercury/Republic | PLAY VIDEO ▶ |
| 35 | NF | HAPPY | NF Real Music/Virgin | PLAY VIDEO ▶ |
| 36 | JONAS BROTHERS | Waffle House | Republic | PLAY VIDEO ▶ |
| 37 | KYLIE MINOGUE | Padam Padam | BMG | PLAY VIDEO ▶ |
| 38 | MILEY CYRUS | Jaded | Columbia | PLAY VIDEO ▶ |
| 39 | ED SHEERAN | Eyes Closed | Atlantic | PLAY VIDEO ▶ |
| 40 | THE WEEKND | Popular f/Playboi C. & Madonna | XO/Republic | PLAY VIDEO ▶ |
| 41 | DOMINIC FIKE | Mona Lisa (Spider-Man: Across | Columbia | PLAY VIDEO ▶ |
| 42 | JONAS BROTHERS | Summer Baby | Republic | PLAY VIDEO ▶ |
| 43 | P!NK | TRUSTFALL | RCA | PLAY VIDEO ▶ |
| 44 | POST MALONE | Mourning | Mercury/Republic | PLAY VIDEO ▶ |
| 45 | HARRY STYLES | Satellite | Columbia | PLAY VIDEO ▶ |
| 46 | PITBULL & LIL JON | Jumpin | Mr. 305 | PLAY VIDEO ▶ |
| 47 | D. GUETTA/ANNE-MARIE/C. LERAY | Baby Don't Hurt Me | Parlophone UK/Warner | PLAY VIDEO ▶ |
| 48 | CALVIN HARRIS & ELLIE GOULDING | Miracle | Columbia | PLAY VIDEO ▶ |



WHHAM!

GEORGE MICHAEL AND...THE...AH, OTHER GUY!

Folks are buzzing about the recently released Netflix documentary entitled (creatively) "Wham" which is an in-depth look at ah....Wham. In the fast paced microscopic look, the famously overshadowed Andrew Ridgely gets his due and day in court and the tragic story of Michael unfolds. Musicheads are giving the show 2 thumbs up. To see the trailer Go-Go here:

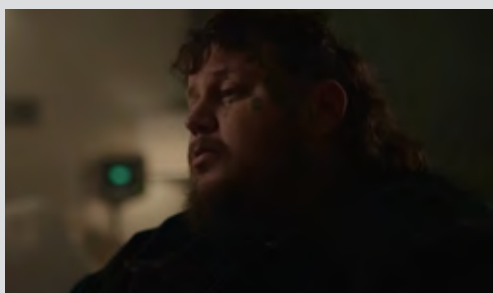


Check out these videos hand-picked by our staff!



OLIVIA RODRIGO - "VAMPIRE"

Well now. Yesirree, it's official: Ms. Rodrigo is mad. Upset. Pissed off. I think "out for blood" is the phrase. And there's certainly plenty of it in this splattered, tattered, and soon-to-be smothered clip of "Vampire"! Click here:



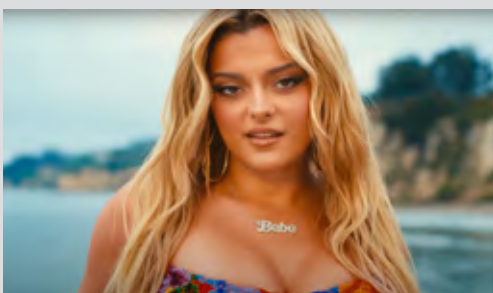
JELLY ROLL - "NEED A FAVOR"

Uh-huh. Yep. There's a new big boy in town and he's blurring the formatic lines! The fans and Country found him first and now the magic jelly is spreading all over the world. If you haven't sunk into the intense album "Whitsitt Chapel" you're late at doing your homework. JR is the next big thing and he's already on a roll. Click here:



P1HARMONY - "JUMP"

With BTS on sabbatical and the members finding traction with solo outings, the wave of K-Popsters keeps rolling. The band P1Harmony aka P1H is finding a paved path of their own with streaming numbers deluxe. If you need some pure K-Pop fun for pretty people, jump on this and click here:



LOUD LUXURY X TWO FRIENDS FT. BEBE REXHA - "IF ONLY I"

So here's what happened: These 2 Canadian DJ dudes said "Hey, let's move to LA and make 2 new friends"! So they did and then they called BeBe Rexha and said "Hey Bebe, we're taking our 2 friends to the pier and we're gonna like, dance and sing so come on" and Bebe said "ok" and they did. The end. Click here:



JANELLE MONAE - "WATER SLIDE"

There may be a secret hidden meaning in this. There could be a lyrical Easter egg of poetic prophecy entangled in the verses.... but we don't think so. We think this is about a lot of barely-clad ladies splashing around in a pool. Summer groove at its best. Click here:



CHARTS/POWERS:

1 AIRPLAY is calculated by Trailing 14 Days of radio airplay on the Key Influencer radio stations – Top 157 radio stations by Average Quarter Hour. Charts are weighted using currently assigned points in Mediabase...100% point value for Morning Drive, 90% for Afternoon Drive, 80% for Mid-days, 70% for nights, 50% for Overnights.

2 AIRSCORE: THE AIRPLAY INTEL 3.0 RETENTION SCORE predicts listener tune-in/tune-out on song play by contemplating the trend over time relationship between local and national airplay, local/regional callout, and audio and video streaming.

3 NATIONAL CALLOUT contemplates more than 1,000 respondents weekly in four regions geographically equivalent over the trailing 14 days of calls.

4 STREAMING, AUDIO contemplates trailing 14 days of all streaming. Songs with insufficient data are designated with an "x". These songs do not affect the Total Performance Score in any way.

5 STREAMING, VIDEO contemplates trailing 14 days of all streaming. Songs with insufficient data are designated with an "x". These songs do not affect the Total Performance Score in any way.

6 SALES is based on 14 days trailing results. Songs with insufficient data are designated as PENDING. Pending songs do not affect Total Performance Score in any way.

HOT ZONE / DEVELOPING

All five components listed above are contemplated. Songs moving up and increasing significantly in TWO or more categories are designated in the Hot Zone. Other new releases are designated as Developing.

RECURRENTS

Recurrents are a simple calculation of songs that have trended downward and no longer qualify for Current status. Trailing 14 days are contemplated, along with 6 weeks of Retention Data, and are computed on a 50/50 level of importance.

ACTION

Songs that are testing either in Callout or in Retention significantly higher than current Airplay rank. These songs are considered UNDEREXPOSED and deserving generally of greater airplay.

STREAMING AUDIO, VIDEO AND SALES

Streaming Audio and Video, and Sales, are based on trailing 14 days data. All major streaming services are used wherever possible, along with sales.

NOTE: Hot AC Callout information is provided as stand-alone information. This data does not factor into the main chart rankings in any way.

CALL US at
818-699-6400
or EMAIL
contact@mmi2020.com

MONDAY MORNING INTEL

© AIRPLAY INTELLIGENCE, LLC, 2021,
No part of the materials available through the
MONDAY MORNING INTEL presentation
may be copied, photocopied, reproduced,
translated or reduced to any electronic
medium or machine-readable form, in
whole or in part, without prior written
consent of AIRPLAY INTELLIGENCE, LLC.
Any other reproduction in any form without
permission of AIRPLAY INTELLIGENCE, LLC
is prohibited. All materials contained on this
presentation are protected by United States
copyright law and may not be reproduced,
distributed, transmitted, displayed, published or
broadcast without the prior written permission of
AIRPLAY INTELLIGENCE, LLC. 2021.

PRIVACY POLICY
[Click Here](#)



THANK YOU
from the entire staff:

PUBLISHERS:

ZEN CZAR

Rich Meyer

CHIEF WRANGLER

Steve Lehman

**MARKETING, PROMOTION
& Magic Fueled by Studio2Bee
MASTERS OF THE SUN**

Skip Bishop

Butch Waugh

Kylee Laynee Higgins

HEAD INTELLICOMMENTATOR

John Shomby

RESEARCH TEAM

**PEOPLE WHO ACTUALLY
DO THE WORK**

Richard R. Deitemeyer

Kate Collins

Brittany Whitney

Brenda Manney

Todd Morris

GRAPHIC DESIGN

EGO Design

PYTHON POWER RANGER

Trent Trento

OPERATIONS

Kylee Laynee Higgins

**PAW POWER
NOT IN MY BOWL**

Hailey Dogg

Monkey Dog

Cooper